

# ANNUAL REPORT 2021 - 2022



# TABLE OF CONTENTS

## INTRODUCTION

- Hello and welcome
- Vision and values

4

## RESEARCH MATTERS

- Trauma Care in Regional, Rural and Remote Queensland
- New program to improve patient flow

6

## IMPACT AND INSPIRATION

- Celebrating nurse-led research
- Focus on clinician wellbeing
- Redcliffe Hospital ED builds research culture
- Supporting pre-hospital research

12

## RESEARCH SUPPORT

- New Emerge grant scheme
- Queensland Research Program

18

## HIGHLIGHTS

- Grants awarded
- Grants completed
- Researchers recognised
- Major funding for respiratory care for kids
- Our valued contributors

24

## CORPORATE GOVERNANCE

- Five minutes with Dr Kim Hansen
- EMF Board
- EMF team
- Organisational structure
- Financial summary
- Financial statement
- Auditors report

38

There were 8.8 million presentations to Australian public hospital emergency departments last financial year. We support emergency medicine research so that patients can trust the care they receive is the best.

# HELLO AND WELCOME

As the repercussions of COVID-19 on healthcare delivery continue to be measured, monitored and forecast, frontline clinicians are evidently under immense pressure.

Most Queensland public hospitals report seeing record patient numbers while at the same time, lacking adequate staff or beds to manage the influx.

In 2020–21, close to 1.9 million Queenslanders attended public hospital emergency departments (ED), with presentations increasing by 6.9 per cent nationally compared to the previous year. <sup>1</sup>

As 2022 began with the COVID-19 Omicron peak and major flooding, patient care was understandably prioritised.

In this environment of increased demand and major staff shortages, some public hospitals had no choice but to cease research activity entirely.

The Emergency Medicine Foundation (EMF) responded with flexibility, tailoring its research programs to support the needs of emergency healthcare clinicians managing the growing demands of the health system.

Working alongside the flagship Queensland Research Program, two new initiatives were introduced that focus on key areas of need.

With thanks to the Motor Accident Insurance Commission, the Trauma Care in Regional, Rural and Remote Queensland Program was offered for the first time in 2021. We proudly announced the first grants to empower frontline clinicians providing trauma care, with more expected to follow.

Hospital overcrowding and lack of available beds significantly delay patient flow in EDs, increasing wait times. Improving Patient Flow in Queensland Public Hospitals is a multi-faceted research program, jointly funded by EMF and Queensland Health to address this major problem.

We know that clinician-led research is a crucial step toward building new and improved systems and processes. EMF research programs form the backbone of our strategic response to support better outcomes for emergency healthcare.

The continued dedication of clinicians to research in this environment is extraordinary. This is mirrored by the commitment of EMF to invest in programs to bolster clinical care and reinvigorate research activity.



Beth Chapman  
EMF General Manager



Dr Kim Hansen  
EMF Board Chair

# VISION & VALUES



## OUR PURPOSE

Invest in emergency healthcare research that generates evidence-based knowledge to enhance patient experience and outcomes, and promote system sustainability.



## OUR PRIORITIES

- Develop new emergency healthcare interventions.
- Generate proven knowledge to create sustainable change.
- Support responsive, agile emergency healthcare.

<sup>1</sup> <https://www.aihw.gov.au/reports-data/myhospitals/sectors/emergency-department-care>


# RESEARCH MATTERS

Through existing and new programs, EMF is supporting COVID recovery efforts to bolster clinical care and reinvigorate research activity.

We are committed to delivering research programs that respond to the needs of emergency healthcare clinicians managing the growing demands of the health system.

Working alongside the flagship Queensland Research Program, two new initiatives were introduced that focus on key areas of need and issues confronting emergency healthcare delivery in all environments.





## Trauma Care in Regional, Rural and Remote Queensland

EMF and the Motor Accident Insurance Commission (MAIC) launched a special research grants program to empower frontline clinicians delivering emergency trauma care in the regions.

Retrieval Services Queensland Research and Evaluation Clinical Director Dr Clinton Gibbs, and Townsville University Hospital emergency physician Dr Tanya Mellett, each received grants - funded by MAIC.

“Through the Queensland Compulsory Third Party (CTP) scheme, we see on average around 7,000 people injured through road trauma lodge a claim each year. For people in Queensland’s regions, often these injuries can be of a more serious nature,” said MAIC Insurance Commissioner Neil Singleton.

EMF Board Director Professor Hugh Grantham ASM worked with an advisory panel of experienced clinicians and researchers formed to oversee the program, including a representative from the Jamieson Trauma Institute on behalf of MAIC.

Professor Grantham said clinician-researchers are vital to identifying and addressing barriers to emergency care in their own regions. “Trauma and emergency healthcare clinicians in regional, rural and remote Queensland are best placed to find appropriate solutions suited to the environments they work in.”

Dr Clinton Gibbs will drive a collaborative project examining access to neurosurgical care following traumatic brain injury (TBI), while Dr Tanya Mellett seeks to reduce unnecessary head scans in vulnerable older patients.

Road trauma is one of the main causes of TBI however the geographic spread of Queensland’s population poses challenges to delivering life-saving emergency care for time-critical injuries.

In some regions, road and aeromedical retrieval services, trauma outreach and specialist transfer are the only means available to improve the chances of patient survival.

The collaborative project involving Retrieval Services Queensland, Jamieson Trauma Institute and Queensland University of Technology will pilot the Injury Treatment and Rehabilitation Accessibility Queensland Index (iTRAQI) in TBI.

iTRAQI will be used to model ideal retrieval pathways for TBI patients to acute neurosurgical and rehabilitation services, to establish opportunities for optimising care.

Patients with minor head injury routinely undergo a scan in EDs due to the risk of a brain bleed. In some cases, the patient must be transferred from rural and remote communities to larger hospitals for a scan.

Dr Tanya Mellett is investigating a way for emergency doctors to identify older patients who can be safely cared for without a scan. With no known Australian studies in the area, the research could help to reduce unnecessary patient transfers, exposure to radiation, and ED wait times.

“



© Copyright News Ltd

“I have a special interest in geriatric emergency medicine and want to be part of advancing the quality clinical care for older people. With the support of an EMF grant, Townsville is aiming to identify older patients with minor blunt head trauma that can be safely managed without a CT brain.”

Dr Tanya Mellett, Emergency Physician, Townsville University Hospital Trauma Care in Rural, Regional and Remote Queensland Grant recipient



## New program to improve patient flow

In May, EMF announced a new research program in partnership with Queensland Health to address major issues affecting the flow of patients in hospital emergency departments.

Patient flow is a whole-of-health-system issue. Hospital overcrowding and lack of available beds can significantly delay patient flow in EDs, increasing the wait time for new patients.

To help address the issue, EMF joined forces with Queensland Health's Healthcare Improvement Unit at Clinical Excellence Queensland on a research program seeking solutions.

Jointly funded by EMF and Queensland Health, the Improving Patient Flow in Queensland Public Hospitals program takes two parallel approaches.

First, a whole-of-system study to establish the magnitude of factors leading to challenges with emergency access in Queensland public hospitals was launched. This was followed by a competitive Special Funding Round to support clinician-led projects seeking to improve patient flow and reduce hospital crowding.

More information about the Improving Patient Flow in Queensland Public Hospitals is available at [emergencyfoundation.org.au/patient-flow](http://emergencyfoundation.org.au/patient-flow).



“

“EMF’s efforts to gain a thorough understanding of acute patient flow through our hospitals is vital to ensure both system sustainability and the maintenance of optimal patient outcomes.

The QAS can both effect changes in flow, but is also affected by a system where patient flow is not efficient. We need whole-of-system buy-in, and it all starts with the critical research that EMF supports.”

Dr Stephen Rashford ASM, Queensland Ambulance Service (QAS)  
Medical Director  
EMF Research Evaluation Panel



# IMPACT & INSPIRATION



EMF grants are boosting research capacity among emergency healthcare clinicians and improving clinical care.

Our initiatives drive research culture in high pressure emergency departments and pre-hospital settings, facilitate research projects in regional and rural hospitals and encourage all disciplines to participate.

Sharing research outcomes is key for translation into clinical care. EMF is pleased to collaborate with the PROV-ED (Promoting value-based care in EDs) Project that supports widespread implementation of value-based ED initiatives with demonstrated outcomes.



## Celebrating nurse-led research

EMF proudly encourages the research goals and achievements of nurses through its programs.

**Chief Nursing and Midwifery Officer for Queensland Health, Adjunct Professor Shelley Nowlan has been in health care for more than 35 years and is a member of the EMF Board.**

Shelley emphasises the benefits of research led by nurses and midwives.

“Nurses and midwives undertaking research is significantly important for their professions. New knowledge contemporises our practice and continues to add to the evidence base that supports safe care,” said Shelley.

Research led by emergency nurse practitioner Dr Hui (Grace) Xu is focused on occupational stress in hospital EDs.

This includes investigating the use of a mindfulness mobile phone app to help frontline healthcare workers manage occupational stress.

Grace shared her research journey at the 2022 EMF Grant Awards Ceremony, alongside fellow nurse and PhD candidate, Sally West.

While coordinating nursing education at the James Cook University Centre for Rural and Remote Health, Sally is a passionate researcher driven to bridge the regional and urban healthcare divide.

Sally is investigating the use of nasal high flow therapy to treat babies with bronchiolitis in regional areas with an EMF Rural and Remote grant.

This line of research has gone on to receive further grants, including from the Medical Research Future Fund.

Australia’s first Paediatric Sepsis Clinical Nurse Consultant, Dr Amanda Harley, has received multiple EMF grants for her research.

Working at both Gold Coast University Hospital and Children’s Health Queensland, Amanda describes the importance of research collaboration.

**“We all work together, there’s no hierarchy, nurses bring something different to the table than doctors, paramedics,” said Amanda.**



## Focus on clinician wellbeing

As healthcare services are forced to continually reprioritise stretched resources, frontline clinicians’ workloads, research activities and wellbeing have been impacted.

**Emergency nurse practitioner Dr Hui (Grace) Xu, is focused on research to improve occupational stress in hospital emergency departments.**

Grace highlights the importance of supporting colleagues, especially as concerns about overstretched resources, staff and hospital beds add pressure to healthcare staff.

“We are concerned about the risks, but we still come to work and support each other as we are all battling with conflicting emotions and priorities,” said Grace.

“It is the time that we need to look after ourselves and each other. We need to be kind and encourage ourselves and those around us.”

Senior Queensland Emergency Medicine doctor, Dr Shahina Braganza has a special interest in maintaining resilience, wellbeing and balance, and agrees with the importance of connection.

Dr Tom Meehan, who holds a conjoint appointment as Associate Professor in the Department of Psychiatry at the University of Queensland, suggests establishing a routine and also encourages connection with fellow clinicians and co-workers to keep motivated.

“Staying in contact with colleagues through email and other online communication platforms such as Microsoft Teams is very useful. The main thing is staying positive even if things around you seem negative and out of your control,” said Tom.

### **DR GRACE XU'S TIPS FOR HOSPITAL AND HEALTHCARE WORKERS**

**Stay healthy:** Eat healthy food, stay hydrated, rest and set boundaries to prevent stress.

**Debrief with your colleagues** or trusted people.

**Practice gratitude:** Use tools to calm your mind. Spend time in nature.

**Above all – stay safe!**





(L-R) Andy Hughes, Caroline Mitchell, Jessica Christie, Dr Jason Chan



# Redcliffe Hospital ED builds research culture

EMF awarded a Research Capacity Building grant to Redcliffe Hospital ED in 2017 to bolster the burgeoning interest of clinical staff engaging in research.

## The Redcliffe Hospital ED team sought to build a culture of research underpinning quality clinical care.

With the EMF grant and co-funding from the Redcliffe Hospital trust, a dedicated Clinical Research Coordinator was appointed.

To overcome the risks associated with key-person dependency, exacerbated by the challenges of COVID-19, the team sought to establish a sustainable structure to suit the hospital's needs.

A rotating research nurse model has proven to be a successful solution. Emergency nurses Caroline Mitchell, Andy Hughes and Jessica Christie share the role and responsibility for driving research.

All three work within the ED, each bringing different clinical nursing experience, strengths and skills.

"Everyone plays a part. The model supports continuity, allowing lessons learnt to be carried by the group as a whole," said ED Senior Staff Specialist and Research Lead Dr Jason Chan.

This approach helped create sustainable change, shared goals and knowledge of past achievements.

"We are trying to demystify research which we expand to include implementation. One way to engage is by demonstrating that research can lead to change," said Caroline.

For other hospitals with similar research goals and challenges, Caroline advocates the importance of good local knowledge of your environment and strong relationships.

"It's about knowing who to ask when you don't have the answers," said Caroline.

# Supporting pre-hospital research

Since expanding grant eligibility to all emergency healthcare professionals providing direct clinical care, EMF has supported research driven by nurses, allied health, ambulance and retrieval staff. This includes funding a second paramedic-led research project in 2021.

## During a medical emergency, ambulance and retrieval services work hand-in-hand with hospital ED clinicians, stabilising and transporting patients for urgent treatment.

Queensland Ambulance Service (QAS) is often first on the scene to assess those with severe head injuries and paramedics play a significant role in preventing secondary brain injury.

EMF grant recipient Dr Wayne Loudon leads the EnTRAIN project investigating whether EEG (electroencephalogram) can help paramedics identify severe head injuries early.

The High Acuity Response Unit (HARU) Brisbane team will perform EEG acquisition for the project.

"There is some evidence to show brain swelling and bleeding can be identified on EEG and we may be

able to change how we treat people according to those changes, and of course we would be able to identify if patients are suffering any seizure activity after their head injury," Wayne said.

Hugo Evison was the first paramedic to receive an EMF grant in 2019 for a collaborative study with Gold Coast University Hospital.

Researchers compared the proportion of peripheral intravenous cannulation (PIVC) in pre-hospital and ED settings that remain unused, to better understand clinical decision making involved in PIVC insertion.

With multiple grant opportunities available, including Emerge for novice researchers, EMF encourages paramedics who are ready to develop new research skills to apply. Read more on page 20.



# RESEARCH SUPPORT



“

“We are so pleased that the EMF continues to believe in and support researchers in regional and rural areas. It is so important that translational research is based on the populations that it seeks to serve. Our project seeks to improve the cardiac health of patients who may be disadvantaged due to reduced access to care. EMF helps us achieve rural research representation in Far North Queensland”

Dr Katrina Starmer, Staff Specialist Emergency Medicine,  
Cairns Hospital,  
Leading Edge & Project grant recipient





## New Emerge grant scheme

EMF is boosting research with a specialised grant scheme for novice researchers.

EMF launched the Emerge grant scheme in 2021 for clinicians ready to develop new research skills. Emerge grants provide up to \$10,000 for projects that can be achieved within 12 months.

To support emergency clinicians who are new to research, EMF introduced mentorship as a key component of the scheme.

Emerge grant applicants nominate a mentor able to offer research training, act as a guide through the process of developing and conducting the project, and meet timelines with a high research standard throughout.

Emergency Physician and EMF-funded researcher Dr Nemat Alsaba encourages all emergency clinicians to consider research and for those starting their research career to work with more experienced researchers.

“I believe it is imperative for emergency department clinicians to get involved in research - whether designing research protocol, writing, testing or participating - there is a researcher in all of us.”



### DR NEMAT ALSABA'S TOP TIPS FOR EARLY CAREER RESEARCHERS

**Find a mentor** who is willing to guide and support you and has the capacity to do so. Seek constant feedback from your mentor on every single step in the research journey.

**Start small but dream big!** Start a small research project as this will help you to navigate the research process and give you an opportunity to learn and practice writing up protocols, and dealing with ethics approvals.

**Do research that matters to you!** Find a project that excites you. This will help you to stay enthusiastic and prevent burnout in the process.

**There is a researcher in all of us** - find your inner researcher and nurture it.

“

“It is important that we start to explore specific components of workplace wellness initiatives that staff find to be most helpful, and determine the influence of local and global factors (such as the pandemic). The support of an EMF grant will help us to continue to capture and analyse qualitative data, to better direct our efforts and funds in the area of workplace wellbeing.”



Dr Rajesh Sehdev, Staff Specialist Emergency Medicine, Townsville University Hospital.  
Emerge grant recipient



# Queensland Research Program

Through its flagship Queensland Research Program, EMF supports clinician-led research that seeks solutions for a sustainable healthcare system.

With thanks to Queensland Health funding, EMF has awarded \$19.3 million in funding to 230 emergency healthcare research projects since 2007.

EMF supports clinician-researchers providing direct care to patients within hospital emergency departments, the Queensland Ambulance Service or Retrieval Services Queensland.

We fund clinician-led research because those at the frontline of emergency medical care are best placed to develop practical solutions for a resilient and capable healthcare system.

This extends beyond the hospital environment - ambulance and retrieval services work hand-in-hand with hospital-based clinicians, stabilising and transferring patients for urgent treatment.

## YEAR IN REVIEW

With most hospitals seeing record patient numbers while at the same time, lacking adequate staff or beds to manage the influx, pressure on frontline clinicians is immense.

EMF is unique in its ability to adapt and deliver programs that respond to the needs of emergency healthcare clinicians managing the growing demands of the health system.

This year, the Queensland Research Program has been augmented beyond the original structure to add grant programs that target specific needs.

This includes the Trauma Care in Regional, Rural and Remote Queensland Program, supported by the Motor Accident Insurance Commission (as featured on page 8).

EMF also partnered with Queensland Health for a special funding round focused on finding innovative solutions for Improving Patient Flow in Queensland Hospitals (see page 10).

EMF is proud to be flexible, agile and supportive during a period of uncertainty.

As clinical workloads increased, capacity for research continued to be impacted. With a focus on recovery, EMF renewed its commitment to bolstering sustainable, long-term research capacity.

Measures include the decision to reinstate Research Capacity Building grants, (as highlighted on page 16) and the launch of a new Emerge grant scheme for novice researchers (see page 20).

We accommodated the needs of clinician-researchers by varying the timing of grant rounds, extending report requirements, and assisting with communication in relation to workloads.

Recognising that staff-wellbeing and psychological safety are vital to recovery efforts, multiple projects have been funded that support tools for frontline clinicians (highlights on page 15).

## FIND OUT MORE

[emergencyfoundation.org.au/queensland-research-program/](https://emergencyfoundation.org.au/queensland-research-program/)  
*The EMF Queensland Research Program is fully funded by Queensland Health.*

# GRANT SCHEMES

## PROJECT

FUNDING: Up to \$300,000 (max \$100,000 p.a)

- Longer term projects (up to three years).
- Whole or partial funding to run larger projects with the aim of generating data to seek further funding from alternative sources.

## JUMPSTART

FUNDING: Up to \$40,000

- Short-term projects (12 months).
- Seed funding for innovative research involving new collaborations and research teams.
- Project outcomes must have potential to seek further funding from granting bodies.

## LEADING EDGE

FUNDING: Up to \$100,000

- Medium-term projects (up to two years).
- Seed funding for innovative research that may have potential for future funding from grant bodies.
- Original research demonstrating importance to emergency care.

## EMERGE

FUNDING: Up to \$10,000

- Short-term projects (12 months).
- Support novice researchers seeking to undertake a small research project.
- Applicants must nominate a mentor to provide research training and guidance.

## SPECIAL FUNDING ROUNDS

**Trauma Care in Rural, Regional & Remote Queensland**  
FUNDING: Up to \$40,000

- Short-term projects (6-12 months).
- Support frontline clinicians in regional, rural and remote Queensland to create an evidence base for the best emergency care of trauma patients.
- Build research capacity for trauma and emergency healthcare in regional, rural and remote Queensland.

**Improving Patient Flow in Queensland Public Hospitals**  
FUNDING: Up to \$200,000

- Short-term (12 months) and medium-term projects (24 months).
- The proposed research must be directed at improving patient flow in Queensland public hospitals and reducing access block in Queensland public emergency departments.



# HIGHLIGHTS



“

“There is a dearth of clinical research in prehospital and out-of-hospital practice. Paramedics are uniquely positioned to contribute their perspective and ideas to bolster emergency healthcare research in these settings. Capacity development through grants from the Emergency Medicine Foundation will aid in innovation and improvement in paramedicine practice well into the future.”

Dr Wayne Loudon, Critical Care Paramedic,  
Queensland Ambulance Service  
Leading Edge grant recipient

# Grants awarded

EMF has a proud history of supporting a broad and diverse range of innovative research led by emergency clinicians. This is a snapshot of new projects awarded EMF grants during 2021-22.



## Head injury in older patients

Trauma Care in Rural, Regional & Remote Queensland

Vulnerable older patients with a minor head injury are routinely scanned in the ED due to the risk of a brain bleed. In some rural and remote communities, the patient must be transferred to larger hospitals for a scan.

This research seeks to help emergency doctors identify older patients who can be safely cared for without a scan.



## Cultural and Linguistic Diversity

Leading Edge

In collaboration with health and community partners, this study will explore Cultural And Linguistic Diversity (CALD) in the ED, to inform support strategies for patients from CALD backgrounds.

Researchers will consider individual patients, as well as their affiliations to organisations, their community and culture and how this impacts the delivery of emergency care.



## Predicting falls in the elderly

Emerge

Falls in the elderly within the community are a common presentation to the ED.

In her first research project, an occupational therapist will use the Clinical Frailty Scale to identify patients at risk of re-presenting. The study will involve physiotherapy and allied health resources during the initial presentation to help prevent further falls.

## Coronary artery disease in Indigenous Australians

Leading Edge

Researchers will measure the rate of coronary artery disease in Aboriginal and Torres Strait Islander people who present to the ED with chest pain. With deaths from heart attack occurring in Indigenous Australians on average at younger ages, this research will guide in the development of specific risk assessment tools.



## Self-harm

Jumpstart

Hospital emergency departments can be the last option for people in a mental health crisis, with self-harm a recognised high-risk event for subsequent suicide. The first of its kind in Queensland, this study will link ED presentations with self-harm during a five-year period to hospital and death records, seeking insights to improve care and recognition.



# Grants completed

Research that EMF supports has potential to benefit patients, staff and hospitals. These examples of recently completed projects have research outcomes that translate into real and practical benefits.



## Psychological safety in ED teams

Jumpstart

The ability for ED teams to work together to escalate, challenge, problem-solve and provide feedback influences the psychological safety of staff.

Researchers examined the factors impacting psychological safety in their local ED. Results showed lower safety in nurses compared to registrars and consultants, while staff working in ED for more than five years felt more psychologically safe than their co-workers who were in their first 6-12 months working in the ED.

Teams that have already worked and participated in education together can build familiarity, which in turn increases psychological safety.



## Domestic and family violence screening

Staff Specialist

Domestic and family violence (DFV) against women is a significant issue in Australia. DFV screening in EDs can increase detection. Researchers examined the practice across multiple Queensland EDs, finding there is no standardised approach and routine screening was rare. Most emergency clinicians believe DFV screening is important and are willing to screen. However, half reported not knowing how to screen, while one in five did not know what to do following a positive screen. The study increased awareness of DFV presentations across participating EDs, with further research expected to benefit EDs state-wide and nationally.

## Reducing ED demand through GP care

Project

This multi-stage study involved literature and data review, plus 514 surveys investigating patients' decision to visit the ED or their General Practitioner (GP) for acute illness. Researchers also interviewed emergency physicians, GPs, health planners and policy makers.

Most patients attending the ED considered their medical condition urgent but only around 20 per cent were able to see the GP first. Better primary care access, coordination, navigation, and patient education were identified as possible solutions to manage lower urgency ED presentations.



## Meditation app for ED stress

Jumpstart

Researchers tested the ability for a mindfulness smartphone app to reduce workplace stress among ED staff. Most participants appreciated the intervention and learned new ways to cope with stress and improve wellbeing. Some used the app daily, and reported perceived benefits, barriers and facilitators to implement digital mindfulness interventions within the ED workforce. The study identified this low-cost, feasible stress management and preventative intervention may also suit other healthcare environments.



# 2021 - 2022 GRANTS AWARDED

	PRINCIPAL INVESTIGATOR	PROJECT	ADMINISTERING INSTITUTION	AMT (\$)
JUMPSTART	Ms Angela Hills	Subculture: Investigating the frequency and outcomes of subsequent blood cultures	Metro North HHS	36,920
	Dr Rachael Nightingale	Cellulitis in the emergency department, a prospective management cohort study	Gold Coast Health	39,792
	Dr Richard Pellatt	The extent of self-harm behaviour of individuals presenting to Queensland emergency departments with mental health problems: a data linkage study	Gold Coast Health	37,816
	Dr Eve Purdy	Buddy-up: exploring the impact of participation in research on reach, adoption, and implementation of evidence-based practice for neck of 5th metacarpal fractures	Gold Coast Health	11,470
	Dr Richard Stone	A community of practice to strengthen pre-hospital interventions and post-discharge care strategies for persons experiencing mental health crises in north Queensland hospitals	Cairns and Hinterland HHS	39,596
LEADING EDGE	Dr Vinay Gangathimmaiah	Identifying RNA-based blood markers in Emergency Department patients with suspected acute ischaemic stroke arising from large vessel occlusion	Townsville HHS	98,326
	Ms Loren Heslop	An Occupational Therapy Pathway for Mild Traumatic Brain Injury ED presentations across the lifespan: A Non-Contemporaneous Cohort Comparison Study	Gold Coast Health	99,423
	Dr Ya-Ling Huang	Exploring Cultural and Linguistic Diversity in the Emergency Department (CALD ED) study	Gold Coast Health	72,609
	Dr Wayne Loudon	EEG in TRaumatic brAin INjury (EnTRAIN)	Queensland Ambulance Service	86,623
	Dr Katrina Starmer	Coronary Artery Disease in Aboriginal and Torres Strait Islander People	Cairns and Hinterland HHS	100,000
	Dr Hui (Grace) Xu	Does LOnge peripheral intraVENous catheter with retractable coiled tip guidewire optimise first insertion success rate for patients with Difficult IntraVenous Access in emergency department: a randomised controlled trial (LOVE-DIVA)	Metro South HHS	100,000
EMERGE	Ms Loren Barton	Does the Clinical Frailty Scale predict re-presentations to the Emergency Department in elderly community-dwelling people following an initial presentation from a fall?	Metro South HHS	10,000
	Dr Peter Del Mar	Endovascular clot retrieval pathway for acute ischaemic stroke: outcomes after-hours in an Australian metropolitan emergency department	Metro North HHS	10,000
	Dr Rajesh Sehdev	Staff experiences about wellness activities at a major referral emergency department in regional Queensland: A qualitative descriptive study	Townsville HHS	9,961
TRAUMA CARE	Dr Clinton Gibbs	Applications of a novel neurosurgical service accessibility index to improve emergency care of people sustaining a road trauma-related traumatic brain injury in Queensland	Retrieval Services Qld	37,667
	Dr Tanya Mellett	Evaluation of older patients with minor blunt head trauma to identify those who do not have clinically important Traumatic Brain Injury and can be safely managed without cranial Computed Tomography	Townsville HHS	34,888

# 2021 - 2022 GRANTS RECIPIENTS

Congratulations to the clinicians and researchers working on new grants awarded by EMF

Dr Charlotte Alexander Ms Aleksandra Ballingall Dr Kate Barrett Ms Loren Barton Dr Judith Bellapart Prof Randipsingh Bindra Dr Wietske Blom-Ham Dr Daniel Bodnar Dr Robert Bonnin A/Prof Emma Bosley Dr Shahina Braganza Dr Anthony Brazzale Dr Nathan Brown A/Prof Andrew Bulmer Dr Denise Bunting Ms Virginia Campbell Dr Donald Campbell OAM Ms Marina Chand Ms Nicole Chapman Prof Alan Clough Dr Amanda Corley Dr Susanna Cramb Prof Julia Crilly OAM Prof Louise Cullen Ms Tania Davis Dr Peter Del Mar Mr Mark Disney Dr Jane Dutson Ms Katie East Dr Theophilus Emeto Dr Nimai Etheridge Senior Constable Angela Evans A/Prof Matt Field Ms Laura Foran Dr Vinay Gangathimmaiah A/Prof Shane George	Dr Clinton Gibbs Prof Jonathan Golledge Ms Karen Green A/Prof Jaimi Greenslade Mr Christopher Hayden A/Prof Ed Heffernan Ms Lauren Heslop Ms Angela Hills Dr Ya-Ling Huang Prof Gerben Keijzers Dr Angeline Khoo Prof Kairi Kolves Mr Robert Lee Dr Wayne Loudon Prof Nicole Marsh Dr Louise McCormack Dr Tanya Mellett Dr Gary Mitchell Dr Elizabeth Mowatt Dr Joseph Moxon Ms Alice Murray Prof Cate Nagle Dr Mark Nelson Dr Son Nghiem Mr Luc Nguyen Ms Katherine Nielsen Dr Rachael Nightingale Dr David Painter Dr Dinesh Palipana OAM Prof William Parsonage Mr Rex Parsons Dr Richard Pellatt Dr Eve Purdy Dr Stephen Rashford ASM Ms Mercedes Ray Mr Jeremy Rigney	Mr Adam Rolley Dr Rajesh Sehdev Dr Nicole Sg Prof Cindy Shannon AM Dr Peter Snelling Dr Annabel Sommerville Dr Gregory Starmer Dr Katrina Starmer Dr Scott Stirling Dr Richard Stone Dr Kirsten Strudwick Ms Amy Sweeny Dr Michael Tervitt Dr Michael Thomas Ms Rhoda Thornton Ms Jo-Anne Timms Prof Vivienne Tippet OAM Mr Frederik Tremayne Prof Kirsten Vallmuur Dr Sushma Vytla Dr Carrie Wang Prof Robert Ware Ms Jacelle Warren A/Prof Angela Watson Dr Daniel Web Dr Rachel Wenke Dr Daniel Weston Dr Richard White Dr Julian Williams Dr Frances Williamson Dr Craig Winter A/Prof Andrew Wong Dr Alan Woodley Dr Hui (Grace) Xu Dr Jesse Young Dr Ping Zhang
--	---	--

EMF is grateful to all members of our Research Evaluation Panel who generously give their time to peer review our grant applications. 2021-2022 Research Evaluation Panel members:

Dr Kylie Baker, Dr Daniel Bodnar, Dr Peter Buzzacott, Prof Alan Clough, Prof Kate Curtis, Dr Dale Edwards, Dr Mark Edwards, Emeritus Prof Gerard FitzGerald, Prof Richard Franklin, Prof Hugh Grantham ASM, Dr Adam Holyoak, Dr Sanjeewa Kularatna, Dr Luke Lawton, Dr Biswadev Mitra, Dr Silvia Manzanero, Dr Ziad Nehme, Dr Angie Nguyen Vu, Dr Siegfried Perez, Prof Greg Peterson, Dr Stephen Rashford ASM, A/Prof Bernice Redley, Dr Lisa Sharwood, Prof Karen Smith, A/Prof Andrew Staib, Dr Karen Theobald, Prof Kerriane Watt, Distinguished Prof Patsy Yates AM



# Researchers recognised

EMF showcased the achievements of grant recipients at a special event attended by Queensland Health and other key supporters.



Frontline clinicians representing all areas of emergency medicine and various regions of Queensland joined their colleagues and fellow researchers at the 2022 EMF Grant Awards Ceremony on 20 July.

Speakers included Queensland Health and Queensland Ambulance Service leaders and researchers seeking solutions to address the challenges impacting emergency healthcare.

Queensland Health Assistant Deputy Director-General, Professor Keith McNeil, talked about the impact of COVID-19 and forging a path to recovery for the hospital and healthcare system.

Professor McNeil urged attendees to continue striving for a resilient health system to support the needs of patients and clinicians.



Professor Keith McNeil

Following on, Queensland Ambulance Service Medical Director Dr Stephen Rashford ASM shared his insights about the patient journey. Dr Rashford is a specialist emergency physician who has overseen expansion of pre-hospital trauma care in Queensland.

With extensive experience as a frontline clinician, researcher and peer reviewer, Dr Rashford spoke about the importance of establishing evidence-based care through research, including the new EMF Improving Patient Flow in Queensland Public Hospitals program.



Dr Stephen Rashford ASM

There was also a spotlight on research led by nurses in urban and rural settings at this year's event.

Grant recipient Dr Hui (Grace) Xu from QEII Jubilee Hospital spoke about EMF support throughout her journey from research novice to PhD candidate. Grace's research is driven by a passion for supporting the wellbeing of clinicians and patients.



Dr Ya-Ling Huang and Amy Sweeny

Fellow nurse and PhD candidate, Sally West travelled from Weipa to talk about the experiences that led to receiving the EMF Rural and Remote grant.

While coordinating nursing education at the James Cook University Centre for Rural and Remote Health, Sally is a passionate researcher driven to bridge the regional and urban healthcare divide.



Dr Wayne Loudon; Dr Allan MacKillop

The first grants in the Trauma Care in Rural, Regional and Remote Queensland, supported by the Motor Accident Insurance Commission (MAIC) were presented during the breakfast ceremony.

EMF Board Chair and event host, Dr Kim Hansen acknowledged the effort made by attendees, as the hospital and health system face escalating challenges.



Dr Susanna Cramb



Dr Silvia Manzanero; Associate Prof Jaimi Greenslade



Sarah Ashover; Champika Pattullo; Rory Barlow





## Major funding for respiratory care for kids

Research to improve support for children presenting to rural and remote emergency departments with respiratory illness received \$1,630,153 from the Medical Research Future Fund (MRFF) in May 2022.

This prestigious national grant is the latest chapter in the success story of the Paediatric Acute Respiratory Intervention Studies (PARIS). PARIS trials were awarded seed funding from EMF since their first study into treating bronchiolitis in infants with high flow nasal cannula (HFNC).

Since then, EMF seed funding has allowed the research team led by Dr Andreas Schibler and Dr Donna Franklin to collect robust data before seeking further competitive grants from major national funding bodies.

PARIS II is a study on HFNC treatment for children aged 1-4 years in 14 hospitals across Australia and New Zealand. Remote PARIS took learnings from these studies to three remote and rural centres in Far North Queensland: Cooktown, Weipa and Thursday Island. Also funded by EMF, this trial is led by nurse and PhD candidate Sally West and aims to reduce transfer rates out of these hospitals to Cairns and Townsville.

PARIS on Country extended to a further 18 centres across Northwest, Torres and Cape, Cairns and Hinterland and Townsville Hospital and Health Services in Queensland. Using a Respiratory Care Bundle, PARIS on Country provides local teams with evidence-based methods, knowledge and skill to care for infants and children presenting to the ED with a respiratory illness.

The aim is to allow vulnerable young patients to remain in the care of their local service, reducing the need for transfer away from their family and community.

It was the only Queensland based project out of just 10 research projects nationally to receive a share of \$24 million from the MRFF to explore better ways to reduce wait times for Australians presenting to EDs.

To date, EMF funded clinician-researchers have leveraged at least \$37million collectively from the National Health and Medical Research Council (NHMRC) and MRFF.



“

“As a physiotherapist working in ED I regularly see elderly patients who fall and was interested to find out if there are ways to predict which patients are more likely to re-present. I started a small quality improvement activity to review our quality of care and with these results have identified areas that could predict re-presentation. It was challenging to find time to complete this review and was daunting to progress it to formal research. Without the support from EMF, I would not have been able to progress this research to a formal project.”

Loren Barton, Emergency Physiotherapy Practitioner,  
Queen Elizabeth II Jubilee Hospital  
Emerge grant recipient



# OUR VALUED CONTRIBUTORS



Dr Ziad Nehme



Cathy Montesin



Maureen Williams

As the only Australian non-profit organisation funding research to improve patient care in a medical emergency, EMF is fortunate to work with highly skilled volunteers.

Each brings vital expertise to the committees that provide the EMF Board with strategic advice, and to the panel of experienced peer reviewers.

Advanced Life Support Paramedic Dr Ziad Nehme ASM of Ambulance Victoria is a valued member of the Research Evaluation Panel (REP). The 2022 Ambulance Service Medal Recipient equally values the role of EMF programs in improving frontline care.

“EMF grant schemes are about supporting our brightest clinician-researchers to deliver practical solutions for problems faced at the coalface of health service delivery,” said Ziad.

“The schemes support clinical-led research because it recognises that those at the frontline are optimally placed to deliver the innovations in patient care that make a difference,” he said.

Cathy Montesin is Chief Financial Officer of Affinity Education Group and EMF Board Director. In addition to her role on the EMF Board, Cathy leads the Finance Risk and Audit Committee as Chair.

“Emergency medicine touches the whole community. The opportunity to be involved with an organisation that improves the patient experience as well as providing significant economic benefits to the whole of society was really appealing to me,” Cathy explained.

This year, the patient experience has been further highlighted with the appointment of consumer representative Maureen Williams to the EMF Research Committee.

Maureen is a passionate patient advocate with a long-term interest in preventing diagnostic error. She has a long association with Australasian College of Emergency Medicine (ACEM) and is involved in several research projects.

“I hope to give patients a voice. I am interested in ways to make emergency departments more user-friendly for patients, especially the elderly and those with poor language skills,” said Maureen.



“

“EMF funding empowers early career researchers to find their feet. Being involved in a variety of EMF projects has allowed me to explore unique ways that culture and research culture impacts ED team performance. The funding provided by EMF has afforded me the resources to ask and answer questions that will set the foundation for an applied research career dedicated to identifying practical ways to optimise our ED teams’ ability to care for patients.”

Dr Eve Purdy, Emergency Physician,  
Gold Coast University Hospital  
Jumpstart grant recipient



# **CORPORATE GOVERNANCE**



# Five minutes with Dr Kim Hansen

EMF Board Chair Dr Kim Hansen is an experienced clinician and respected leader in emergency medicine, passionate about supporting clinicians to deliver high quality care

Since Dr Kim Hansen was appointed Chair of the EMF Board in 2019, the healthcare system has faced major challenges including the COVID-19 pandemic and hospital overcrowding.

As Chair of the Australian Medical Association Queensland (AMAQ) Ramping Roundtable, Kim's expertise has been regularly sought by media.

She received the 2022 ACEM Distinguished Service Award for significant contributions to the development of emergency medicine over the past two decades.

"I've worked with many inspirational, dedicated and selfless people in ACEM who volunteer their time to progress our profession. I'm proud of what we have achieved, especially in quality and safety, access block advocacy, and gender equity," said Kim.

Despite the challenges, Kim's passion for emergency medicine is bolstered by clinician-led research.

"I believe that being an emergency doctor is one of the most rewarding and useful roles that exist in society. It's such a privilege to help people at their most vulnerable moments," said Kim.

"We have a younger speciality, with a need to clarify what treatments add value, to innovate our processes and with many areas to investigate. Without research we are walking in the dark and cannot move forward confidently."

A highly experienced clinician and leader in the field of emergency medicine, Kim advocates for high quality care that is accessible for patients and streamlined for clinicians.

Recognising the vital role of research to achieving these goals in a sustainable system, Kim is proud of the rapid response by EMF in tailoring grant programs.

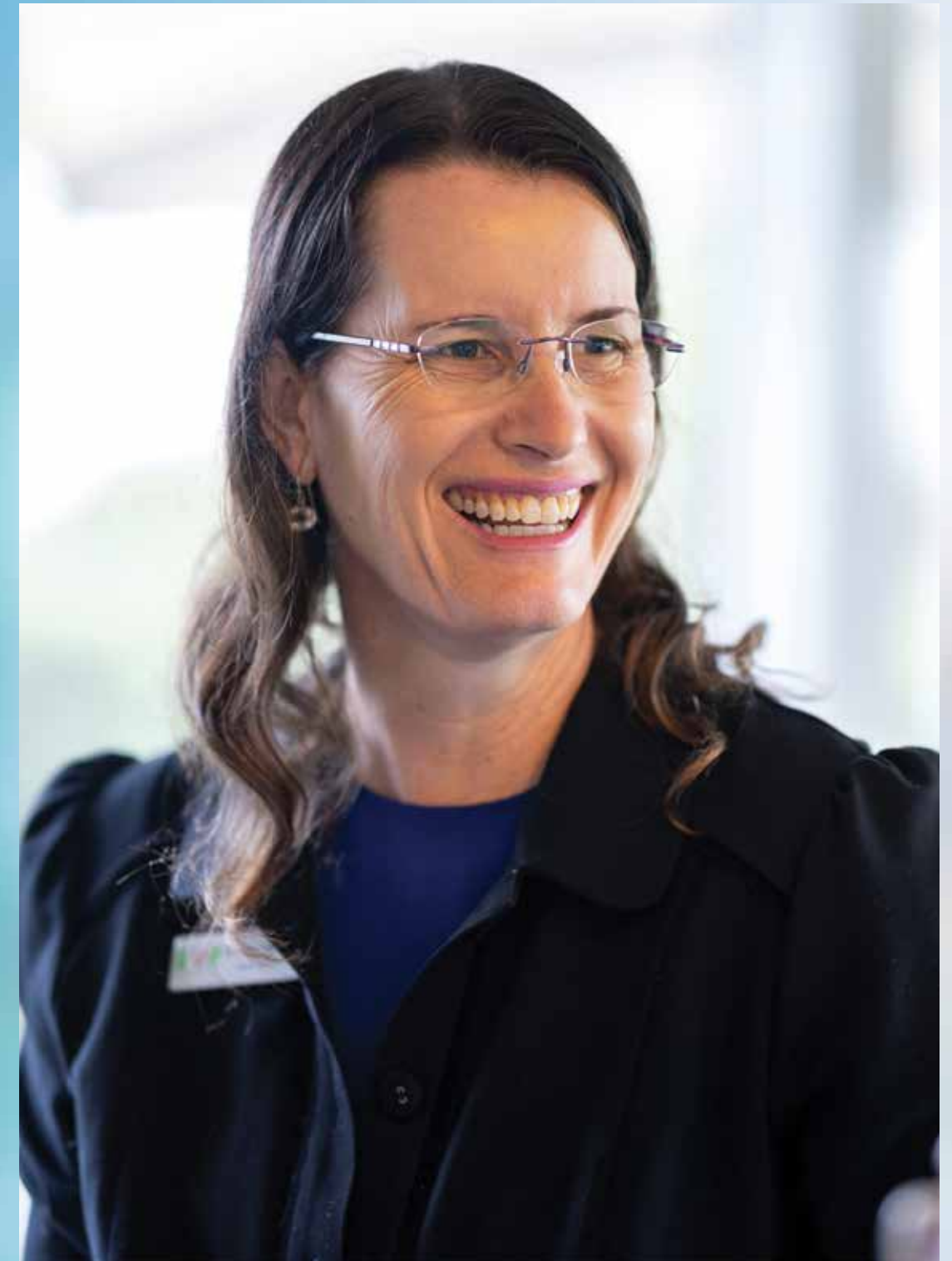
"We've broadened the research we support and, just as importantly, the clinician-researchers we support now come from diverse groups," said Kim.

"This extends from large, established, multidisciplinary research institutions in Queensland's largest hospitals to passionate individuals in unique settings such as rural ED nurses, remote doctors, nurse practitioners, allied health practitioners, paramedics and retrieval clinicians."

Kim describes research as a long game that requires immense dedication but is deeply rewarding.

"Research gives clinicians the ability to impact the care of patients on a broad scale.

"Working on research with a multi-disciplinary team that extends beyond the department boundaries, and often beyond the hospitals', state or national borders benefits not only the patient in front of you, but all future patients that might come through Emergency Departments, potentially across the world."





# EMF BOARD

The EMF Board holds fiduciary, legal and strategic responsibilities. The Board includes four emergency medicine specialists nominated by the Australasian College for Emergency Medicine (ACEM) and appointed by EMF founding members, a nominated Queensland Health representative and two skills-based Directors elected by the Board.



**Chair (ACEM nominee)**  
**Dr Kim Hansen**  
MBBS(HonsI), MBA, FACEM

Kim is an experienced emergency medicine consultant passionate about high quality care that is accessible for patients and streamlined for clinicians. Kim is the Director of Virtual Emergency Department in Metro North and the Director of Critical Care, Women's and Children's Health at Redcliffe Hospital.



**Director**  
**Dr Andrew Gosbell**  
BAppSC, PhD, GAICD

Andrew is an advisor to the associations and charities sector, providing consultancy services to for-purpose organisations. This includes advice, support and mentoring to senior executives, boards and professional teams on strategy, governance, planning, organisational structure, advocacy and policy development. Andrew holds a PhD in vision science and has an enduring passion for research and its translation to improving healthcare outcomes.



**Director (ACEM nominee)**  
**Professor Hugh Grantham ASM**  
MBBS, FRACGP

With interests in prehospital and emergency medicine, medical education and clinical governance, Hugh was Medical Director of the Ambulance Service in Adelaide, and inaugural professor of paramedics at Flinders University. He is Chair of the EMF Research Committee.



**Director**  
**Ms Cathy Montesin**  
BBus (Hons), GradDipAppFinInv, ACA  
Bringing extensive experience in finance, Cathy is a skilled Director appointment for the EMF Board, and Chief Financial Officer for Affinity Education Group. She is Chair of the EMF Finance Risk & Audit Committee.



**Director (Queensland Health representative) Adjunct Professor Shelley Nowlan**  
RN, BN, MHM, GradDip PM, MAICD, FACN  
An executive leader within Queensland Health since 1998, including as the Chief Nursing and Midwifery Officer, Shelley is the Deputy National Rural Health Commissioner, a key role dedicated to rural health services and its workforce.



**Director (ACEM nominee)**  
**Dr Andrew Spiller**  
BAppSC, PhD, GAICD  
Andrew is an Emergency Medicine physician working in the Emergency Department at The Prince Charles Hospital, where he is Director. Andrew is a member of the EMF Research Committee and was previously on the Strategic Grants Committee.



**Director (ACEM nominee)**  
**Dr Viet Tran**  
BSc, MBBS, FACEM  
An emergency medicine physician based at Royal Hobart Hospital, Viet founded TASER (Tasmanian Emergency Medicine Research Group). He is the Regional Censor for Tasmania, and Discipline lead for Emergency Medicine at the Tasmanian School of Medicine.



Members of the EMF Board and team (absent: Dr Viet Tran, Director; Ms Beth Chapman, General Manager; Ms Kellie Furey, Communications Manager.)



# The EMF team



**GENERAL MANAGER:**  
**Ms Beth Chapman**  
BBus, CPA

As EMF General Manager, Beth leads the team and works closely with the Board to set and achieve strategic direction, organisational objectives, vision and purpose. Beth is also responsible for overseeing all aspects of financial management, company secretarial and statutory reporting obligations. Since joining EMF in 2013, Beth has held various leadership roles focused on supporting the organisation’s growth and operations.



**RESEARCH MANAGER:**  
**Dr Hong Nga (Angie) Nguyen Vu**  
MA, PhD

Angie is responsible for the EMF research grants programs. She has a vast depth of experience in university research and research management gained in Germany, the United States, Switzerland and Australia.



**COMMUNICATIONS MANAGER:**  
**Ms Kellie Furey**

Bringing 20-plus years of health and not-for-profit communications experience, Kellie joined EMF in January 2020 to drive engagement with media, social media and other online platforms, as well as managing publications and events.



**GRANTS ASSOCIATE:**  
**Dr Annice Kong Bsc (Hons I)**  
BSc (Hons I), PhD

Annice works closely with Research Manager (Angie) and Grants Officer (Dee) to provide comprehensive support for all aspects of EMF grant programs. Annice completed her PhD at The University of Queensland and has experience in clinical research and data management.



**GRANTS OFFICER:**  
**Ms Dee Tierney**

Dee is the first point of contact and main provider of support for hundreds of EMF grant recipients. Her position involves meticulous administration of all EMF awarded research grants in collaboration with the Research Manager, Angie and Grants Associate, Annice.



**OFFICE ADMINISTRATOR:**  
**Ms Jody Tregidgo**

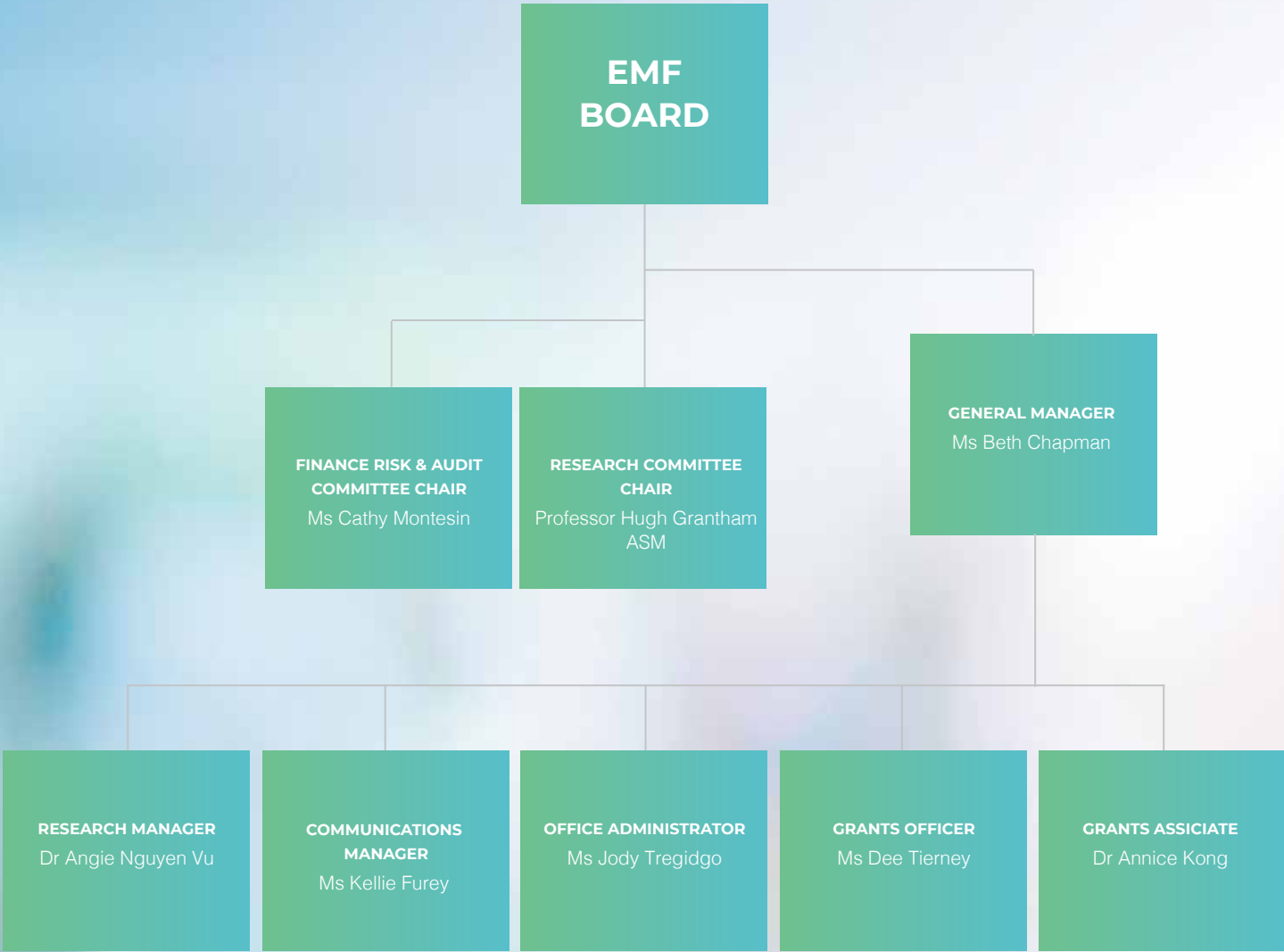
Jody is the EMF gatekeeper, playing an integral role in keeping daily operations running smoothly and efficiently. Her extraordinarily broad remit makes her indispensable to the entire team.

# ATTENDANCE REGISTER

NAME	POSITION	BOARD	FRAC	RC
		Meetings key: x/y (x=number attended y=number held)		
Dr Kim Hansen	Board Chair	5/5		
Dr Andrew Gosbell	Board Director	5/5		
Professor Hugh Grantham ASM	Board Director, RC Chair	5/5		2/2
Ms Cathy Montesin	Board Director; FRAC Chair	5/5	4/4	
Adj Professor Shelley Nowlan	Board Director	4/5		
Dr Andrew Spiller	Board	4/5		1/2
Dr Viet Tran	Board Director	5/5		
Dr Stephen Macdonald	RC member			2/2
Dr Amanda Neil	RC member			2/2
Dr Angie Nguyen Vu	RC member			2/2
Associate Professor Bernice Redley	RC member			2/2
Ms Maureen Williams	RC member			1/1
Distinguished Professor Patsy Yates AM	RC member			2/2
Ms Susanne Le Boutillier	FRAC member		4/4	
Mr Scott Bryant	FRAC member		3/4	
Ms Jacqueline Keller	FRAC member		1/1	
Mr Martin Heads	FRAC member		3/4	
Mr Simon James	FRAC member		3/3	
Ms Beth Chapman	General Manager, Company Secretary, FRAC member		4/4	

**EMF Board Committees** FRAC: Finance, Risk and Audit Committee; RC: Research Committee

# ORGANISATIONAL STRUCTURE



## Financial Summary

With a very small team, EMF runs a highly efficient operation. In 2021-22, EMF committed \$825,000 to research grants and building clinician research capacity.

This investment was less than budgeted for the financial year as a direct result of the continued COVID-19 impact which forced many clinicians to suspend or delay research activity, with patient care an obvious clinical priority.

Funds not awarded in 2021-22 will be carried forward and invested in research programs that support post-COVID recovery at a time when clinician-researchers have the renewed energy and resources to refocus their attention on this important work.

Other funds were used to manage research activities, to support new and expanded research initiatives in the future, fulfil our contractual reporting and promotional obligations, and for corporate administration. Further financial information is available in the EMF 2021-22 Financial Report [available online](#).

### COMPLETION OF FINANCIAL STATEMENTS

On 7 September 2022, the EMF Finance, Risk and Audit Committee (FRAC) made recommendation to the EMF Board which endorsed the 2021-22 Financial Statements for signing on 14 September 2022. Bentleys Chartered Accountants independently audited the statements.

### FINANCIAL OUTCOME

EMF operated within its budget in accordance with total sources of funds and revenue from the Queensland Government, earnings on investments as well as income from other sources, for the 2021-22 financial year. In total, EMF dispersed \$1.47m for research and research infrastructure. The company incurred operational expenses of \$500,000, including corporate expenses, and communication and marketing activities. This was a 15% decrease on expenditure from the previous year (2010-2021: \$590,000).

### SOURCES OF FUNDS

Since 2008, EMF has received \$2 million, plus GST, annually from Queensland Health to enable and fund the Queensland Research Program. In 2021-22, EMF received the second tranche of funding under its three-year funding contract with Queensland Health, from 2020-21 to 2022-23. EMF also received \$261,719 from other sources, including \$54,199 generated in interest on EMF's invested cash reserves, and \$200,000 being the first of a three-year agreement with Queensland Health to fund vital research into patient flow, as well as \$7,520 in donations.



# FINANCIAL STATEMENT

EMERGENCY MEDICINE FOUNDATION  
STATEMENT OF FINANCIAL POSITION  
AS AT 30 JUNE 2022

	Note	2022	2021
		\$	\$
<b>ASSETS</b>			
<b>CURRENT ASSETS</b>			
Cash and cash equivalents	7	8,132,261	7,790,456
Trade and other receivables	8	33,732	3,167
Other assets	9	14,494	18,602
<b>TOTAL CURRENT ASSETS</b>		<b>8,180,487</b>	<b>7,812,225</b>
<b>NON-CURRENT ASSETS</b>			
Property, Plant & Equipment	10	123,610	183,329
<b>TOTAL NON-CURRENT ASSETS</b>		<b>123,610</b>	<b>183,329</b>
<b>TOTAL ASSETS</b>		<b>8,304,097</b>	<b>7,995,554</b>
<b>LIABILITIES</b>			
<b>CURRENT LIABILITIES</b>			
Trade and other payables	11	136,026	79,069
Lease liability – office space		55,812	54,278
<b>TOTAL CURRENT LIABILITIES</b>		<b>191,838</b>	<b>133,347</b>
<b>NON CURRENT LIABILITIES</b>			
Provisions	12	42,133	33,631
Lease liability – office space		73,558	128,173
<b>TOTAL NON CURRENT LIABILITIES</b>		<b>115,691</b>	<b>161,804</b>
<b>TOTAL LIABILITIES</b>		<b>307,529</b>	<b>295,151</b>
<b>NET ASSETS</b>		<b>7,996,568</b>	<b>7,700,403</b>
<b>EQUITY</b>			
Retained surplus (deficit)		7,996,568	7,700,403
<b>TOTAL EQUITY</b>		<b>7,996,568</b>	<b>7,700,403</b>



“

“EMF funding has enabled our Allied Health and multidisciplinary teams the opportunity of collaboration on pathways for mTBI management from ED. It has been so valuable in facilitating our exploration of patient outcomes and potential in this area and across services. We look forward to sharing the outcomes of our work.”

Lauren Heslop, Senior Occupational Therapist  
Gold Coast University Hospital  
Leading Edge Grant recipient



# AUDITORS REPORT

## INDEPENDENT AUDITOR'S REPORT TO THE MEMBERS OF EMERGENCY MEDICINE FOUNDATION LTD



### Report on the Audit of the Financial Report

#### Opinion

We have audited the financial report of Emergency Medicine Foundation Ltd (the "Company"), which comprises the statement of financial position as at 30 June 2022 and the statement of profit and loss and other comprehensive income, statement of changes in equity and statement of cash flows for the year then ended, notes comprising a summary of significant accounting policies and other explanatory information, and the director's declaration.

In our opinion the financial report of the Company is in accordance with Division 60 of the *Australian Charities and Not-for-Profit Commission Act 2012*, including:

- (i) giving a true and fair view of the Company's financial position as at 30 June 2022 and of its performance for the year then ended; and
- (ii) complying with Australian Accounting Standards – Simplified Disclosures and Division 60 of the *Australian Charities and Not-for-Profits Commission Regulations 2013*.

#### Basis for Opinion

We conducted our audit in accordance with Australian Auditing Standards. Our responsibilities under those standards are further described in the *Auditor's Responsibilities for the Audit of the Financial Report* section of our report. We are independent of the Company in accordance with the ethical requirements of the Australian Professional and Ethical Standards Board's APES 110 *Code of Ethics for Professional Accountants* (the Code) that are relevant to our audit of the financial report in Australia. We have also fulfilled our other ethical responsibilities in accordance with the Code.

We believe that the audit evidence we have obtained is sufficient and appropriate to provide a basis for our opinion.

#### Material Uncertainty Related to Going Concern

We draw attention to Note 1(p) in the financial report disclosing that the company's current funding agreement expires 30 June 2023 and a new agreement has not yet been finalised. This matter indicates a material uncertainty that may cast significant doubt on the company's ability to continue as a going concern. Our opinion is not modified in respect of this matter.

#### Responsibilities of the Directors for the Financial Report

The directors of the Company are responsible for the preparation and fair presentation of the financial report in accordance with Australian Accounting Standards and the *Australian Charities and Non-for-Profits Commission Act 2012* and for such internal control as the directors determine is necessary to enable the preparation of the financial report that gives a true and fair view and is free from material misstatement, whether due to fraud or error.

In preparing the financial report, the directors are responsible for assessing the ability of the Company to continue as a going concern, disclosing, as applicable, matters related to going concern and using the going concern basis of accounting unless the directors either intend to liquidate the Company or to cease operations, or has no realistic alternative but to do so.

The directors are responsible for overseeing the company's financial reporting process.

## INDEPENDENT AUDITOR'S REPORT TO THE MEMBERS OF EMERGENCY MEDICINE FOUNDATION LTD (Continued)



### Auditor's Responsibilities for the Audit of the Financial Report

Our objectives are to obtain reasonable assurance about whether the financial report as a whole is free from material misstatement, whether due to fraud or error, and to issue an auditor's report that includes our opinion. Reasonable assurance is a high level of assurance, but is not a guarantee that an audit conducted in accordance with the Australian Auditing Standards will always detect a material misstatement when it exists. Misstatements can arise from fraud or error and are considered material if, individually or in the aggregate, they could reasonably be expected to influence the economic decisions of users taken on the basis of this financial report.

As part of an audit in accordance with Australian Auditing Standards, we exercise professional judgement and maintain professional scepticism throughout the audit. We also:

- Identify and assess the risks of material misstatement of the financial report, whether due to fraud or error, design and perform audit procedures responsive to those risks, and obtain audit evidence that is sufficient and appropriate to provide a basis for our opinion. The risk of not detecting a material misstatement resulting from fraud is higher than for one resulting from error, as fraud may involve collusion, forgery, intentional omissions, misrepresentations, or the override of internal control.
- Obtain an understanding of internal control relevant to the audit in order to design audit procedures that are appropriate in the circumstances, but not for the purpose of expressing an opinion on the effectiveness of the Company's internal control.
- Evaluate the appropriateness of accounting policies used and the reasonableness of accounting estimates and related disclosures made by the directors.
- Conclude on the appropriateness of the directors' use of the going concern basis of accounting and, based on the audit evidence obtained, whether a material uncertainty exists related to events or conditions that may cast significant doubt on the Company's ability to continue as a going concern. If we conclude that a material uncertainty exists, we are required to draw attention in our auditor's report to the related disclosures in the financial report or, if such disclosures are inadequate, to modify our opinion. Our conclusions are based on the audit evidence obtained up to the date of our auditor's report. However, future events or conditions may cause the Company to cease to continue as a going concern.
- Evaluate the overall presentation, structure and content of the financial report, including the disclosures, and whether the financial report represents the underlying transactions and events in a manner that achieves fair presentation

We communicate with those charged with governance regarding, among other matters, the planned scope and timing of the audit and significant audit findings, including any significant deficiencies in internal control that we identify during our audit.

Bentleys Brisbane (Audit) Pty Ltd  
Chartered Accountants

Ashley Carle  
Director  
Brisbane, 15 September 2022



A member of Bentleys, a network of independent advisory and accounting firms located throughout Australia, New Zealand and China that trade as Bentleys. All members of the Bentleys Network are affiliated only, are separate legal entities and not in partnership. Liability







### **PARTNER**

Support research or researcher



### **DONATE**

Make a tax deductible donation



### **COFUND**

Cofund with your organisation



Emergency Medicine Foundation

Emergency Medicine Foundation Ltd  
Suite 1b, Terraces, 19 Lang Parade, Milton, Qld 4064

**General phone:** 07 3720 5700

**Office hours:** 9am to 5pm, Monday to Friday

**General email:** [info@emfoundation.org.au](mailto:info@emfoundation.org.au)

