

ANNUAL REPORT

2019 - 2020



TRANSFORMING EMERGENCY HEALTHCARE



Emergency Medicine Foundation



Last financial year, 8 million patients presented at an Australian public hospital emergency department, including 1.7 million children. As patient presentations increase, so do the challenges faced by emergency healthcare clinicians

TABLE OF CONTENTS

Welcome	4
Our year in review	8
Research grants awarded	16
Our researchers	21
Building emergency medicine capacity	27
Organisation and governance	31
Help make research happen	41

HELLO AND WELCOME

We are incredibly thankful to our emergency healthcare workforce and all of those at the frontline who are essential to the health and safety of our community. Never more so, as the SARS-CoV2 crisis continues, and governments try to anticipate the healthcare needs of entire communities also at risk from bushfires, drought, floods and dust storms.

Emergency care clinicians and hospitals bear the brunt of these crises. On behalf of the EMF Board, executive and team, we share the gratitude of our entire population, and are committed to do all we can to support those on the frontline of healthcare delivery. During these unprecedented times this requires new approaches, new treatments and new ways of doing things.

The Emergency Medicine Foundation exists to find the new solutions that revolutionise emergency healthcare. We invest in generating evidence-based knowledge and enabling its rapid translation into clinical practice. This vital work creates sustainable change in the care

Every year has defining moments, but the global pandemic of 2020 and the environment we find ourselves in is extraordinary

delivered by emergency departments, ambulance and retrieval services, resulting in better patient outcomes.

In this way, EMF makes an important contribution to building a resilient and adaptable emergency healthcare system, with sustainable solutions underpinned by robust clinician-led research. Our research programs distribute around \$1.3M annually, totalling almost \$20M in the last decade. In addition, our Special COVID-19 grant round is helping clinician-researchers to address new questions and issues. We invite you to read more about these innovative projects in this report.

The issues we face as a nation demand a united approach, with the health sector working in close partnership with government, and in collaboration with industry and communities. It is our responsibility to lead by example, driving the research programs that are vital to our clinicians, our policy makers, and to a world class emergency healthcare service.



Dr Kim Hansen, EMF Chair



Dr Sonj Hall, EMF General Manager

STRATEGIC DIRECTION 2019 - 2022



OUR VISION

To find solutions that revolutionise emergency healthcare



OUR VALUES

Visionary • Excellence • Integrity • Respect



OUR PRIORITIES

We support responsive, agile and sustainable emergency healthcare through the development of new interventions



WHAT WE DO

We invest in generating evidence-based knowledge and enabling its rapid translation into clinical practice. This vital work creates sustainable change in the care delivered by emergency departments, ambulance and retrieval services, resulting in better patient outcomes



HOW WE WORK

Our research grant programs and capacity building initiatives support and nurture emergency healthcare clinicians – doctors, nurses, paramedics and allied health professionals – to conduct high-quality, innovative research

OUR IMPACT

EMF-funded research improves patient care, services and clinical training. This means more patients receive the right treatment at the right time, returning home sooner.

Research outcomes include:

- Shorter diagnosis to treatment time for trauma patients
- New diagnostics and protocols for faster diagnosis of chest pain
- Internationally recognised treatment for babies with bronchiolitis
- Improving the way older Australians are cared for in a medical emergency





OUR YEAR IN REVIEW

The Emergency Medicine Foundation is supporting five clinician-research teams to investigate the impact of the COVID-19 pandemic on emergency department presentations, and ways for staff to safely deliver treatment



Research has never been more vital, underpinning the foundations of new and improved systems and processes for Australian emergency healthcare, developing proven new interventions and changing clinical practice

CLINICIAN SUPPORT DURING A PANDEMIC

When an unexpected health crisis placed entire communities at risk globally, emergency healthcare clinicians were among those directly impacted

In April the EMF Board responded quickly, by announcing the Special COVID-19 grant round to help front-line clinicians improve patient outcomes, protect healthcare staff from infection, and adapt policy and practice across the Queensland health system.

The special round supported five innovative research projects, led by Queensland clinicians.

The clinician-led research will investigate the effect of COVID-19 on emergency department presentations, the risk to staff of infection, and the ways in which infectious diseases are treated, including the role of technology.

Our support for emergency departments did not stop there. Recognising the increased pressure on frontline workers, EMF invited emergency department clinicians to share their own experiences and tips for coping.

An online article was published featuring insights from an emergency nurse practitioner, a senior emergency medicine doctor and a psychiatrist, with online resources and information for fellow clinicians to access and share with colleagues.

The value of this information during a critical period was described by contributor Dr Shahina Braganza: "Being informed contributes significantly to managing fear. I have experienced the allaying of anxiety that comes simply from being a part of the conversation. It has helped me to take the philosophy that every day we will do the best we can with what we've got."



FIRST DO NO HARM

Emergency Medicine Foundation funded research is finding better ways to assess and treat patients

Annually up to 3000 Australians suffer pneumothorax (a collapsed lung), when a leak from the lung's surface causes air to collect inside the chest. This painful condition can be caused by underlying lung disease, but also occurs for no obvious reason.

Treatment has traditionally involved inserting a tube into the chest to drain the air, helping the lung to reinflate. This painful procedure can lead to organ injury, bleeding, infection and sometimes surgery.

A six-year study involving 316 patients and 100 researchers across Australia and New Zealand found patients treated with pain relief and sent home to await the lung's natural re-expansion were less likely to experience the condition recurring. With an EMF research grant, 10 Queensland emergency departments took part in the study.

Another major study, also supported by EMF, will help emergency clinicians identify vulnerable children who may have suffered head injury due to abuse.

When small children present with head trauma, clinicians need to consider the possibility that the injury was not accidental, to avoid missing abusive head trauma, or an incorrect diagnosis.

The Australasian Paediatric Head Injury Rules study run by the PREDICT Network defined a new predictive tool to help guide clinicians in identifying young patients at risk of abusive head trauma. Results were published in the prestigious Journal of Paediatrics and Child Health and the Emergency Medicine Journal. For more about the PREDICT Network see page 30.



OPIOID RESEARCH REDUCES PRESCRIBING

With an Emergency Medicine Foundation grant, the Royal Brisbane and Women's Hospital has reduced opioid prescribing by 21 per cent following a 12-month intervention

Research led by a team of emergency department clinicians, overseen by experienced researcher and Quality Use of Medicines Pharmacist, Champika Pattullo, sought to address increased opioid prescribing across Australia.

"Opioid Stewardship is all about finding the balance between providing good pain management and avoiding unintended harm," explained Champika.

The Australian Institute of Health and Welfare report 5,112 emergency department presentations and 9,636 hospitalisations due to opioid poisoning in 2016 - 2017.

The Opioid Prescribing Toolkit focuses on equipping clinicians with the knowledge to discuss and facilitate non-pharmacological strategies with patients, only prescribing opioids as part of an overall pain management strategy, if at all.

"The Toolkit aims to educate clinicians that opioids are only a small part of managing pain and that often, other methods can and should be used to reach the optimal patient outcome," said Champika.

Following the Toolkit's introduction, results showed a significant shift towards tailored prescribing of opioids, as well as improved medical handover to General Practitioners.

Combined with the resources to help clinicians monitor, evaluate and re-evaluate along the way, the project is on track to become a sustainable model that can be applied to other clinical settings across Australia with projects emerging in paediatrics, maternity, surgery and medical wards.

Champika Pattullo
at the 2020 Grants
Awards Ceremony



IMPORTANT WIN FOR EMF FUNDED RESEARCH

Two sepsis studies funded by the Emergency Medicine Foundation have gone on to win major grants from the Australian Government's Medical Research Future Fund

Before researchers can apply to the Medical Research Future Fund, they must collect strong data. EMF Project Grants support large research projects with the aim of seeking further funding.

EMF funded research led by Associate Professor Luregn Schlapbach and Dr Peter Snelling is investigating genomics-based sepsis diagnostic tools for paediatric patients. Sepsis, also known as blood poisoning, can develop when the body is fighting infection.

The research team aims to improve treatment and outcomes, shorten hospital stays, and allow regional patients to be managed closer to home. The MRFF grant will enable continuation of this life-saving work involving the application of a one-hour diagnostic test.

The MRFF also announced funding for the Australasian Resuscitation In Sepsis Evaluation: Fluid or Vasopressors in Emergency Department Sepsis (ARISE:Fluids) Trial. The Queensland arm of this large clinical trial into how intravenous fluids are used to treat sepsis patients was co-funded by EMF and the Gold Coast Hospital Foundation.

Study co-lead, Professor Gerben Keizjers said he was hopeful the research would create a major treatment change for sepsis.

ARISE: Fluids created a collaborative research network for the large-scale trial, which also established Gold Coast University Hospital as an Australian leader in sepsis research.



HIGHLIGHTS



“The grant EMF provided directly supported research and capacity building in the Torres Straits, as we work towards community-driven research and improved health outcomes in the region.”

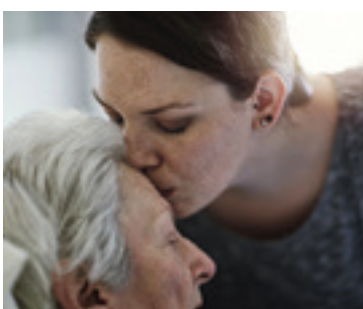
Dr Allison Hempenstall
Torres and Cape Hospital and Health Service
2018 JumpStart Grant

RESEARCH HIGHLIGHTS



Can mobile robotic telepresence help clinicians safely deliver care to patients?

Isolating patients with respiratory symptoms in a high-risk zone, and using Personal Protective Equipment, are vital to reduce the risk of COVID-19 transmission within emergency departments. This study will test the feasibility of using mobile robotic telepresence to support quality clinical care and contactless communication between isolated patients and staff.



Understanding end-of-life care for older people

In hospital emergency departments, unexpected deaths occur due to acute illness or sudden, traumatic events while expected deaths stem from deterioration of chronic illnesses. Researchers will investigate the end-of-life care provided for both expected and unexpected deaths among people aged 65 years and over who die within 48 hours.



Can assessment of parental concern improve sepsis recognition in children?

This research will investigate the role of parents in recognising the signs of sepsis in their young children. Faster recognition of sepsis can save lives and parents can provide important information to recognise disease severity. This study will consider parental observations alongside medical and nursing assessment, clinical signs, symptoms, and tests, and organ dysfunction.



Improving the care of skin infections in the Torres Straits: Cellulitis Outpatient Intravenous Antibiotic Study in the Torres (COAST)

Bacterial skin infection cellulitis is extremely common in the tropics, with Torres Strait patients often transported into Thursday Island Hospital for intravenous antibiotics. The COAST study demonstrated that outpatient management of skin infection is effective, safe and appreciated by patients in the region. The study is expected to reduce preventable hospital admissions, retrieval, emergency and hospital costs.



Data linkage & patient outcome study: Aeromedical Services in Central Queensland

This first-of-its-kind study aims to link existing emergency department, aeromedical, hospital and death databases. This will provide a clearer understanding of patient outcomes, aeromedical requirements for specific illnesses or injuries, and a better understanding of the aeromedical patient journey to fine-tune health service delivery ensuring better outcomes.

A photograph of a medical professional in blue scrubs adjusting a patient on a medical table. The patient's leg is visible, wearing a brown shoe. A blue plastic bag is draped over part of the table. The scene is set in a clinical environment with a tiled floor.

RESEARCH GRANTS AWARDED

QUEENSLAND RESEARCH PROGRAM

Since awarding our first Queensland Health-funded grants in 2008, the Emergency Medicine Foundation has driven a dramatic increase in emergency healthcare research activity

It is our great privilege to award grants through the Queensland Research Program, our oldest and largest funding program.

We fund clinician-led research because clinicians are best placed to develop practical evidence-based solutions for a resilient and capable healthcare system. It is through their innovative research that emergency healthcare services can grow to meet future demands and improve the patient experience.

The importance of this work is self-evident. From the introduction of new devices to treat gravely ill babies with bronchiolitis, to new chest pain diagnostic protocols, and a reduction in opioid over-prescribing, EMF funded projects are actively reducing presentations and transfers to emergency departments, and the length of stay.

To be eligible for EMF funded grants, researchers must be a Queensland Health clinician providing direct clinical care to patients in emergencies within:

- public emergency departments
- Queensland Ambulance Service or Retrieval Services Queensland

During the 2019-2020 financial year, EMF's two annual grant rounds attracted high quality applications from emergency care clinicians including nurses and, for the first time, a paramedic.

A special funding round was also offered in response to the COVID-19 pandemic, to help frontline clinicians improve patient outcomes, protect healthcare staff from infection, and adapt policy and practice across the health system. At the time of announcing the grants in April, there were 6.15million confirmed cases worldwide of COVID-19.

THIS YEAR

18

EMF grants awarded

44

grant applications submitted

52

active grants

17

projects completed

141

clinicians and collaborators
on new grants

OUR GRANT SCHEMES

PROJECT GRANTS

FUNDING:

Up to \$150,000 per year for three years (total \$450,000)

- Whole or partial funding to run larger projects with the aim of generating data to seek further funding from alternative sources

JUMPSTART

FUNDING:

Up to \$40,000

- Seed funding for innovative research involving new collaborations and research teams.
- Project outcomes will have potential to lead to further funding from granting bodies

LEADING EDGE

FUNDING:

Up to \$100,000

- Seed funding for innovative research that may have potential for future funding from grant bodies
- Original research demonstrating importance to emergency care

SPECIAL FUNDING ROUND - COVID-19

FUNDING:

Up to \$200,000, total grant pool

- Seed funding for new research that improves patient and community outcomes, protects emergency healthcare staff from infection, and is translated into improved healthcare policy and/or practice across the Queensland health system

2019 - 2020 GRANT RECIPIENTS

PRINCIPAL INVESTIGATOR	PROJECT	ADMINISTERING INSTITUTION	AMOUNT (\$)
JUMPSTART			
Mr Hugo Evison	Clinician decision making in peripheral intravenous cannulation in emergency settings	QLD Ambulance Service	34,794
Ms Amanda Harley	Can assessment of parental concern improve sepsis recognition in children?	Gold Coast HHS	39,685
Ms Hui (Grace) Xu	uSing Meditation App to Reduce ED occupational sTress SMART trial	Metro South HHS	13,650
LEADING EDGE			
Dr Nemat Alsaba	Understanding end-of-life care for older people presenting to the ED	Gold Coast HHS	88,357
Dr Jaimi Greenslade	Providing a safe and efficient method of chest pain assessment	Metro North HHS	93,240
Mrs Sarah Weber	Reaction of Emergency Services uPON Disasters in Queensland	Metro South HHS	62,959
+STAFF SPECIALIST			
Dr Sean Clarke	ED diabetic ketoacidosis presentations in people with type 1 diabetes: a pilot to improve clinical and public health system outcomes	Metro North HHS	64,314
Dr Barrie Field	An evaluative study of a collaborative ED mental health program	Sunshine Coast HHS	96,676
Dr Siegfried Perez	Patterns of prescription opioid use following ED presentation for minor road traffic crash injury	Metro South HHS	99,513
PROJECT GRANTS			
Dr Kate Hooper	Better ways of pain management in adults with hip fractures	Townsville HHS	82,872
Dr Peter Snelling	Using bedside ultrasound to diagnose forearm fractures in children	Gold Coast HHS	159,458
Dr Katrina Starmer	Coronary Artery Disease in Aboriginal and Torres Strait Islander People	Cairns and Hinterland HHS	115,000
+ TRAINEE GRANTS			
Dr Lucy Dunstan	Prospective Observational study of cannulation of Kids in the Emergency (POKIE)	Gold Coast HHS	27,128
++ SPECIAL FUNDING ROUND - COVID-19			
Dr Mark Baldwin	Can mobile robotic telepresence help clinicians safely deliver care to ED patients?	Metro North HHS	21,865
Professor Julia Crilly OAM	The COVERED COVID study: Comprehensive Outcomes that VERify the impact on EDs from COVID-19	Gold Coast HHS	65,504
Dr Megan King	SARS-CoV2 infection and immunity in frontline hospital staff during the COVID-19 pandemic	Gold Coast HHS	52,493
Dr Elizabeth Marsden	Patterns of QLD ED presentations for older adults in three time periods: pre, peri and post COVID-19	Sunshine Coast HHS	37,431
Dr Kevin McCaffery	Comparison of respiratory supports in the mitigation or exacerbation of environmental droplet contamination following coughing	Children's Health Queensland HHS	8,472

+ Have now been phased out

++ This grant scheme was awarded out of Round by the EMF Board

HHS = Hospital and Health Service

RESEARCH GRANTS AWARDED

Queensland Research Program applications by grant scheme

This financial year saw fewer applications on average, but a much higher success rate for applicants. The two annual grant rounds combined attracted fewer applications (25) resulting in a success rate of 52 per cent (13 successful grants). The Special COVID-19 grant round received 19 Expressions of Interest, with 5 innovative research projects awarded grants.

GRANT TYPE	APPLICATIONS	SUCCESSFUL	REQUESTED (\$)	AWARDED (\$)
JumpStart	4	3	130,204	88,129
Leading Edge	6	3	542,813	244,556
Trainee Grant Scheme	3	1	83,714	27,128
Staff Specialist	7	3	548,774	260,503
Project Grants	5	3	1,215,496	357,330
Special funding round COVID-19	19	5	926,425	185,765

Research grants governance and selection process

Our world-class research programs are governed in line with peak medical research funding bodies, including the National Health and Medical Research Council. Through our rigorous and transparent processes, only the most scientifically robust projects are awarded funding. EMF carefully reviews and selects research projects that are translatable, with potential health economic benefits and a strong focus on better patient outcomes. All EMF research grant recipients are required to provide six-monthly progress reports and a final report when the project is completed. Written requests for changes to the original approved project, including an extension of the period of the research grant, will be considered.



“Collaborations and relationships have been built, opportunities that may not have presented without support from EMF and have opened pathways for my professional development. I am now part of the Gold Coast University Hospital emergency department research team and work for Griffith University as a senior research assistant.”

Hugo Evison
Queensland Ambulance Service
2019 JumpStart Grant



OUR RESEARCHERS

The Queensland Research Program supports all emergency healthcare clinicians providing clinical care including nurses, allied health professionals, paramedics, rural generalists as well as emergency specialists and medical trainees

Emergency Physiotherapy
Practitioner

NOW SUPPORTING MORE RESEARCHERS

In emergency healthcare, the valuable contributions, impact and influence of different disciplines driving world-leading research is rapidly growing.

EMF has awarded several grants to nurses and for the first time this year, a paramedic with a passion for research, while allied health professionals are also making valuable contributions to research.



Professor of Emergency Care, **Julia Crilly OAM** is a respected educator and emergency medicine research champion. Julia's research focuses on emergency care for vulnerable people, emergency workforce improvements, research capacity building, and mentoring fellow clinicians.



With a passion for the mental health and wellbeing of hospital and healthcare workers, nurse practitioner **Hui (Grace) Xu** is exploring how a mindfulness smartphone app can help emergency department staff manage occupational stress.



Amanda Harley specialises in paediatric sepsis. As Australia's first dedicated paediatric sepsis Clinical Nurse Consultant, Amanda educates Queensland hospital staff and is assessing the ways parental concern can improve sepsis diagnosis in children.



Queensland paramedic **Hugo Evison** developed a keen interest in emergency research while completing his Master of Emergency Health and is studying the factors associated with clinicians' decision to administer Peripheral Intravenous Cannulas.



Champika Pattullo is a Quality Use of Medicines Pharmacist and Clinical Lead for the Opioid Stewardship Program. An experienced researcher, Champika is committed to improving use of medicines and developed the Opioid Prescribing Toolkit.



Physiotherapist **Kirsten Strudwick** is helping to find better ways to treat 300,000 Australians that present to hospital suffering joint, ligament, muscle, nerve and tendon pain each year.

AN EARLY FOUNDATION IN RESEARCH

The research journey can never start too early for clinicians. EMF's Trainee Grant Scheme supports projects led by medical trainees, while enabling mentoring from more experienced research supervisors.

The Trainee Grant Scheme has so far supported 22 projects led by medical trainees that have delivered valuable research outcomes and clinical changes, including:



Dr Richard Pellatt led the first Australasian study of its kind which found that buddy taping a common hand fracture had similar outcomes to a plaster cast. The research is expected to lead to policy changes at the Gold Coast University Hospital and other emergency departments.



A team led by **Dr Kerina Denny** investigated how many patients are given antibiotics in the emergency department and what proportion are either not required or have been given incorrectly, identifying the need to improve prescribing practices.



Dr Robert Osgood led research which resulted in Logan Hospital emergency department clinicians adopting a new technique for managing critically ill patients with fluid therapy. Clinicians were quick to learn the technique to measure fluid responsiveness of patients, particularly those with severe infections, to avoid risk of fluid overload which can have serious consequences.



"Without the financial and ongoing support of EMF, our research dealing with infectious diseases in the ED, from a sore throat to life threatening conditions like septicaemia, would have not been possible."

Dr Ulrich Orda, Director of Emergency
North West Hospital and Health Service
2016 Staff Specialist Grant



10 NEWS FIRST / **GRACE XU**
NURSE PRACTITIONER



Emergency medicine has been highlighted in 2020, with public recognition of clinicians during the COVID-19 pandemic, and Queen's Birthday Honours for researchers



CELEBRATING RESEARCHER ACHIEVEMENTS

Emergency Medicine Foundation funded researcher Professor **Julia Crilly** was acknowledged in the 2020 Queen's Birthday Honours List, receiving an Order of Australia Medal for service to emergency care nursing.

It has been a big year for Julia, who was also named Champion of Education in the Gold Coast Women of the Year awards for "training, teaching, supervision and mentoring of medical, nursing and pharmacy women in their research endeavours".

Emergency nurse practitioner **Hui (Grace) Xu** whose study seeks to improve the mental health and wellbeing of fellow clinicians has been recognised in the media. Grace's EMF-funded SMART Trial testing a mindfulness mobile app for emergency department staff featured on Ten News.

Another researcher acknowledged in the media is **Apil Gurung**. Apil's research into decision-making by nurses transferring aged care residents to the emergency department led to an article in The Conversation, "Our ailing aged care system shows you can't skip on nursing care".

The Guardian highlighted a world first study led by **Dr Gabriella Wood (nee Butler)** and **Dr Ogilvie Thom** and funded by EMF. The study showed that falling off a ladder can impact long-term mental health, especially in older males.

In April, EMF funded researcher **Kristin Edwards** was featured by Women in STEMM Australia, the association for women in science, technology, engineering, mathematics and medicine. Kristin is a valued contributor to a study into aeromedical services in Central Queensland as featured on page 15.

We acknowledge these and all clinician-researchers whose hard work, dedication, passion and innovation is changing the face of emergency medicine in Australia and beyond.

EMF funded research has resulted in over 550 scientific journal publications. This year, 43 research papers featured in publications including the prestigious New England Journal of Medicine, as well as Emergency Medicine Australasia and Emergency Medicine Journal, rated among the most influential scientific journals for this field of medicine.



"Staff longevity is vital to a stable healthcare workforce, and the wellbeing of ED staff is essential to high quality patient care. With the support of an EMF grant, we are testing an innovative digital technology to help reduce hospital staff stress and improve wellbeing."

Hui (Grace) Xu

Emergency Nurse Practitioner, PhD candidate
2019 JumpStart Grant

Congratulations to the 141 clinicians and researchers working on new grants awarded by EMF in 2019-2020

Dr Kylie Alcorn	Dr Robert Eley	Dr Frances Kinnear	Ms Rosemary Rogers
Dr Nemat Alsaba	Dr Rachel Elphinston	Mr Clayton Lam	Dr Sean Rothwell
Dr David Bade	Mr Hugo Evison	Mr David La Spina	A/Prof Luregn Schlapbach
Dr Mark Baldwin	Dr Mark Fairley	Mr Rob Leerentveld	Mr Joseph Sharpe
Mr Mark Barlow	Dr Barrie Field	Dr Daniel Lindsay	Mr Randall Simon
A/Prof Francesca Beaudoin	Dr Allison Fifoot	Dr Paula Lister	A/Prof Pathmanathan Sivakumaran
Dr Christa Bell	Dr Gavin Fincher	Dr William (Bill) Lukin	Dr Peter Snelling
Mr Andrew Bermingham	Ms Laura Foran	Mr Benjamin Mackie	Mr Paul Stankunas
Dr Randipsingh (Randy) Bindra	Dr Thuy Frakking	Dr Elizabeth Marsden	Prof Chris Stapelberg
Mr Matthew Boyd	Dr Chris Freeman	Ms Nicole Marsh	Dr Gregory Starmer
Dr David Brain	Dr Jeremy Furyk	Prof Andrea Marshall	Dr Katrina Starmer
Dr Andrew Broadbent	Dr Niranjana Gaikwad	Dr Katya May	Prof Michele Sterling
A/Prof Marc Broadbent	Dr Vinay Gangathimmaiah	Dr Kevin McCaffery	Ms Kirsten Strudwick
Dr Nathan Brown	Dr Audra Gedmintas	Ms Ruth McCaffery	Dr John Sutherland
Ms Tileah Drahm Butler	A/Prof Shane George	Dr Louise McCormack	Ms Amy Sweeny
Dr Michael Butterfield	Dr John Gerrard	Prof Nigel McMillan	Dr Anthony Tuckett
Dr Joshua Byrnes	Dr Kristen Gibbons	Dr Ruairaidh McRitchie	Prof Mieke van Driel
A/Prof Cate Cameron	Dr Andrew Giles	Ms Tracey McTigue	Dr Jelena Vider
Ms Virginia Campbell	Ms Kate Gilmour	Dr Adam Michael	Adj Prof Marianne Wallis
Dr Peter Carr	Ms Peta Gimpel	Prof Marion Mitchell	Dr Ben Walters
Dr Christopher Carty	A/Prof Laurie Grealish	Mr Mark Moore	Prof Robert Ware
Dr Corey Cassidy	A/Prof David Green OAM	Dr Elizabeth Mowatt	Ms Jacelle Warren
Dr Nandini Choudhury	A/Prof Jaimi Greenslade	A/Prof Peter Newcombe	Dr Nathan Watkins
A/Prof Kevin Chu	Prof Keith Grimwood	Dr Son Nghiem	Dr Stuart Watkins
Dr Sean Clark	Dr Christian Hamilton-Craig	A/Prof Jane Nikles	Prof Marcus Watson
Dr Karen-Ann Clarke	Mr Michael Handy	Dr Anthony Padowitz	Dr John Waugh
Prof Jason Connor	Ms Amanda Harley	Dr Dinesh Palipana OAM	Ms Sarah Weber
Dr Alison Craswell	Dr David Herd	Prof William Parsonage	Dr Mark Wenitong
Prof Julia Crilly OAM	Ms Petina Hodges	Dr Siegfried Perez	Dr Nicholas West
Prof Alan Cripps	Dr Samantha Hollingworth	Dr Michael Polischuk	Dr Annette Woodhouse
Prof Louise Cullen	Dr Kate Hooper	Dr Jamie Ranse	Prof Martin Wulschleger
Ms Tania Davis	Dr Ya-Ling (Rebecca) Huang	Dr Kristen Ranse	Ms Hui (Grace) Xu
Dr Michelle Davison	Dr Steven James	Dr Eric Richman	Dr Ping Zhang
Dr Kerina Denny	Dr Amy Johnston	Prof Claire Rickard	
Dr Lucy Dunstan	Prof Gerben Keijzers	Dr Carrie Ritchie	
Dr Cassanne Eccleston	Dr Megan King	Dr Robert Roan	

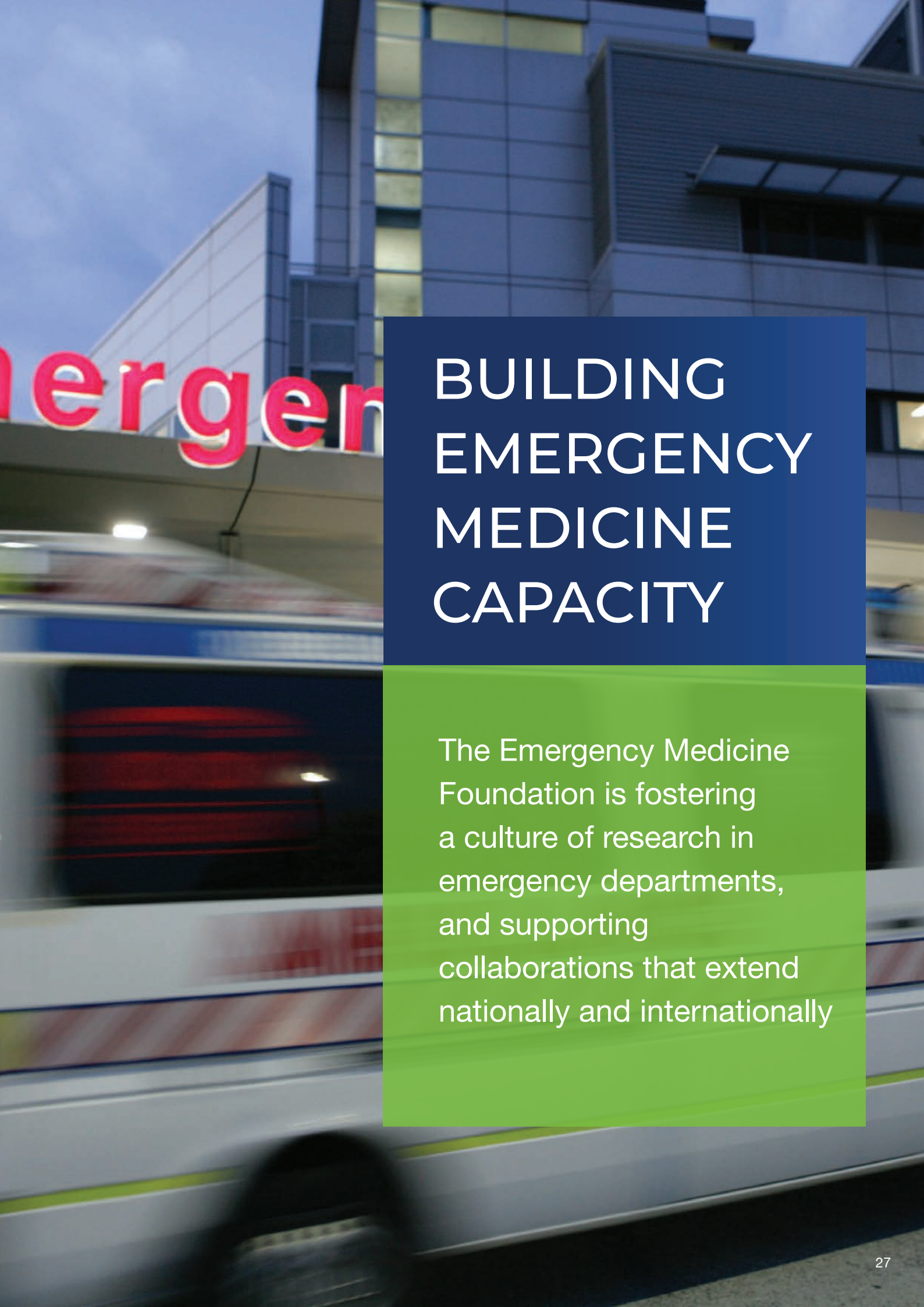


"From the time I was a junior doctor to now, EMF was a grant-providing institution and was also critical in validating my research ideas.

An EMF grant also provides validation to the Logan community that the research being conducted is not just ethically and scientifically sound, but also of the highest quality."

Dr Siegfried Perez

Director of Research, Logan Hospital Emergency Department
2019 Staff Specialist Grant



BUILDING EMERGENCY MEDICINE CAPACITY

The Emergency Medicine Foundation is fostering a culture of research in emergency departments, and supporting collaborations that extend nationally and internationally

BUILDING RESEARCH CULTURE

Emergency care and research work hand in hand at Gold Coast University Hospital, where clinicians strive to embed research into clinical practice, education, new guidelines and policy

The Emergency Medicine Foundation supports this vision, as one of the main funding bodies that is supporting Gold Coast University Hospital researchers.

One of the hospital's leaders, Professor Julia Crilly OAM acknowledges the importance EMF grants have had on her research journey, as well as improvements in clinical practice and patient care.

"It has been outstanding having that opportunity and funding available for emergency care research. Absolutely that has set things up, not for only myself, but a lot of emergency clinicians in Queensland and we're certainly grateful for that," said Professor Crilly.

Projects seeded through EMF funding have also attracted major funding from the National Health & Medical Research Council.

"EMF grants provide a unique opportunity for nurses and clinicians to set up programs of research where you start by understanding what the current state of play is in clinical practice, so being able to firstly know what the problem is, whether in fact there is or isn't a problem there, what you can do to change practice and to then change patient outcomes."

"Through EMF grants we've certainly been able to do that, and there are some really good examples from emergency clinicians who have demonstrated fabulous outcomes for patients."

Professor Julia Crilly OAM and Professor Gerben Keijzers presenting at the 2020 Grants Awards Ceremony



ROYAL BRISBANE & WOMEN'S HOSPITAL

EMF-funded researcher Professor Louise Cullen is a world leader in the rapid diagnosis of chest pain. Based at the Royal Brisbane and Women's Hospital (RBWH) Emergency and Trauma Centre, Professor Cullen champions the role of clinicians in research.

"Being at the coalface means we know where the problems lie. We also have some insights into where the solutions may be and if we were able to rigorously evaluate that, we are then in a situation where we may be able to influence clinical change quickly. By embracing clinicians involved in the research, we can also drive that change," said Professor Cullen.

With EMF funding, RBWH appointed Dr James Hughes whose research focuses on patients presenting to emergency in pain. Since Dr Hughes' appointment, research among nursing and allied health clinicians has been renewed, and there has been an increase in collaboration with major research centres, universities, ambulance and pathology services.



Professor Louise Cullen at RBWH



THE PRINCE CHARLES HOSPITAL

With an EMF Capacity Building grant, The Prince Charles Hospital emergency department has engaged in a range of research projects with significant input from emergency clinicians working in collaboration with other Queensland and interstate emergency departments, and the CSIRO (Commonwealth Scientific and Industrial Research Organisation). Grant recipient Dr Frances Kinnear was awarded the Metro North Research Support Award in 2019.

DRIVING RESEARCH COLLABORATION

The reach of Emergency Medicine Foundation extends across Australia through research collaborations that involve multiple sites nationally.

Numerous EMF-funded projects driven by the PREDICT network involve clinician-researchers across Australian and New Zealand emergency departments.

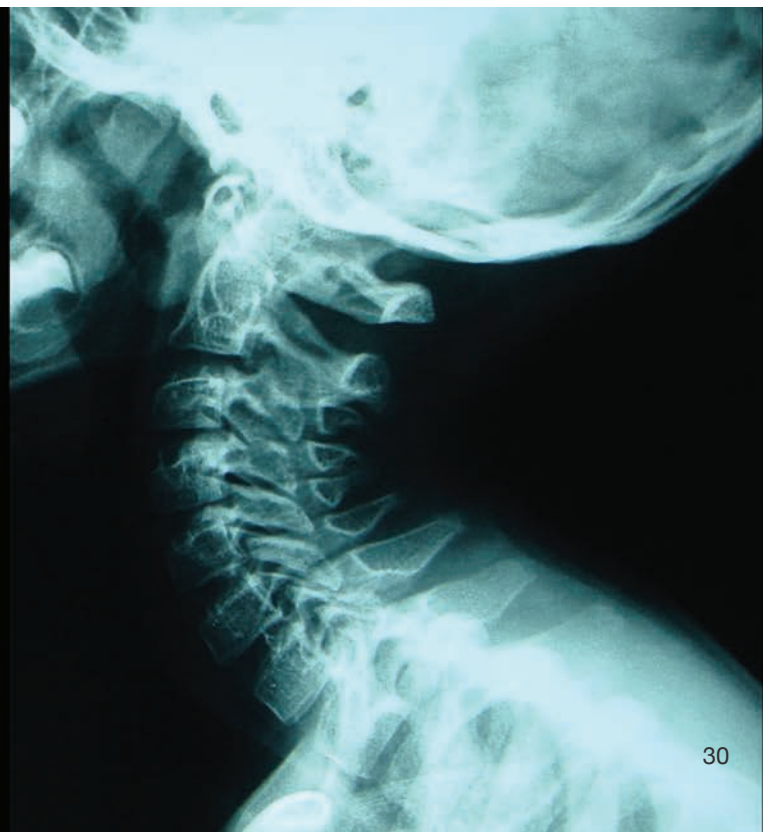
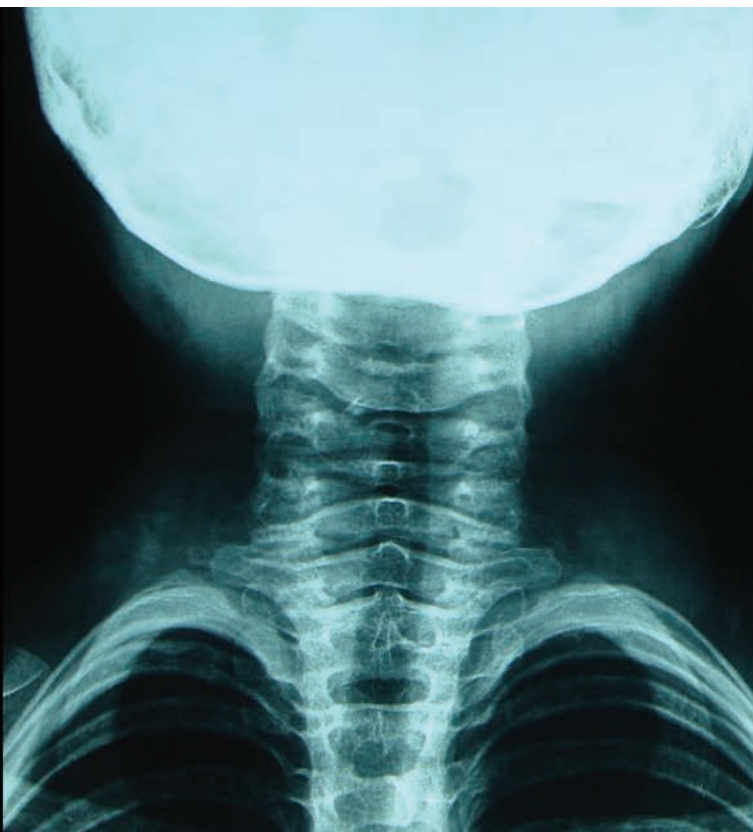
The Study of Neck Injuries in Children (SONIC) aims to avoid unnecessary exposure to scans, x-rays, CT or MRI which may bring health risks and distress for vulnerable young patients. Following a successful pilot, PREDICT researchers plan to expand their work with EMF funding, in addition to a recent \$2.5million Medical Research Futures Fund grant.

Another recent PREDICT project resulted in changes to emergency care for childhood head injuries and development of a guideline for clinicians in Australia and New Zealand.

The Australian Paediatric Head Injury Rules Study discovered a proven way for clinicians to identify the likelihood that a head trauma resulted from abuse. It also found that children doing recreational sports such as horse riding, skate boarding and bike riding, are more likely to suffer serious head injuries than those playing contact sports.

The network has attracted funding from the National Health & Medical Research Council, including for a landmark study into care of infants with bronchiolitis. The study, co-funded by EMF found that nasal high-flow therapy halved the number of babies needing a higher level of care.

The network is also driving research into severe acute asthma in young patients. The national study will include 18,000 children aged between 1 and 18 years, with EMF funding Queensland sites.





ORGANISATION AND GOVERNANCE

OUR BOARD

The Emergency Medicine Foundation Board holds fiduciary, legal and strategic responsibilities. The Board includes four emergency medicine specialists who are Fellows of the Australasian College for Emergency Medicine (ACEM), nominated by ACEM and appointed by EMF. The Board also includes a nominated Queensland Health representative and two skills-based Directors elected by the Board.



Chair (ACEM nominee): Dr Kim Hansen
MBBS (Hons I) MBA, FACEM

An experienced emergency medicine consultant passionate about safety and quality in healthcare, Dr Hansen is Director of Emergency at St Andrew's Hospital, and a senior staff emergency specialist at The Prince Charles Hospital.



Director (ACEM nominee): Dr Jeremy Furyk
MBBS, MPH&TM, MSc, FACEM

Dr Furyk is a senior emergency physician and an active clinical researcher currently based at the University Hospital Geelong; he was previously at the Townsville University Hospital.



Director (ACEM nominee): A/Prof Shane George
BSc, MBBS, MPH, FACEM

A/Prof George is a paediatric critical care physician at Gold Coast University Hospital, and the clinical lead of children's critical care research for Gold Coast Health.



Director: Mr Chris Headon
BLLB (Hons), BCom (Accounting), GradDip Legal Practice, GAICD

Mr Headon joined the EMF Board in November 2019, as one of two skilled Director appointments. He is a Director of KPMG Law Australia specialising in technology and intellectual property law.

OUR BOARD



Director: Ms Cathy Montesin
BBus (Hons), GradDipAppFinInv, ACA

Ms Montesin is a skilled Director appointment for the EMF Board, and the Chief Financial Officer with Affinity Education Group.



Director: Adjunct Professor Shelley Nowlan (Queensland Health representative)
RN, BN, MHM, Grad Dip PM, MAICD and FACN

Having held executive leadership roles within Queensland Health since 1998, Adj Professor Nowlan is the State's Chief Nursing and Midwifery Officer.



Director (ACEM nominee): Dr Andrew Spiller
BSc, MBBS(Hons), FRACGP, FACEM

Dr Spiller is an emergency medicine physician at Greenslopes Private Hospital and at Logan Hospital where he is Deputy Director. He has been a member of the EMF Strategic Grants Committee since 2017.



Retiring Director: Dr Peter Isdale AM
PhD, BA (Hons), MAICD

EMF gratefully acknowledges Dr Peter Isdale AM who retired from the Board in September 2019 after five years, during which time his commitment, dedication and contributions were beyond significant and greatly appreciated.



The EMF team (L-R) Kellie, Dee, Jody, Sonj , Angie, Beth

OUR TEAM

General Manager: Dr Sonj Hall Harkness Fellow, PhD, MPH, CLAWS, RN, FACHSM, GAICD

With more than three decades of healthcare leadership experience across health, government, academia and the not-for-profit sector, Dr Sonj Hall leads EMF's strategic direction, business development and stakeholder engagement. Sonj works closely with the EMF Board to set and achieve organisational objectives, vision and purpose, while safeguarding sustainability and growth.

Company Secretary and Chief Financial Officer: Mrs Beth Chapman BBus, CPA

Beth oversees financial management, company secretarial and statutory reporting obligations, drawing from more than 20 years in senior roles within the private, public and not-for-profit sectors in Australia and the United Kingdom.

Research Manager: Dr Hong Nga (Angie) Nguyen Vu MA, PhD

Angie is responsible for the EMF research grants programs. She has a vast depth of experience in university research and research management gained in Germany, the United States, Switzerland and Australia, including management roles at Griffith University and the University of Queensland.

Communications Manager: Ms Kellie Furey

Bringing 20-plus years of health and not-for-profit communications experience, Kellie joined EMF in January to drive engagement with media, social media and other online platforms, as well as managing publications and events.

Grants Officer: Ms Dee Tierney

Dee is the first point of contact and main provider of support for hundreds of EMF grant recipients. Her position involves meticulous administration of all EMF awarded research grants in collaboration with the Research Manager, Angie.

Office Administrator: Mrs Jody Tregidgo

Jody is the EMF gatekeeper, playing an integral role in keeping daily operations running smoothly and efficiently. Her extraordinarily broad remit makes her indispensable to the entire team.

EXPERT CONTRIBUTORS

The Emergency Medicine Foundation is grateful to the vastly experienced clinicians and experts in their field, who generously donate their time to oversee competitive and rigorous grant rounds.

Dr Stephen Macdonald serves on the EMF Scientific Advisory Committee. Dr Macdonald is an Emergency Medicine Staff Specialist, Clinical Associate Professor of the University of Western Australia Medical School and Research Fellow with the Centre for Clinical Research in Emergency Medicine, Harry Perkins Institute of Medical Research.

“Research is the foundation of quality clinical care. EMF is pivotal in developing the capacity and culture to embed research that addresses the questions that matter to acute patients and those who treat them,” explained Dr Macdonald.

“A key strength of EMF is fostering collaborations to undertake investigator-initiated research within emergency care and beyond. As well as better outcomes, the EMF model has been proven to be cost effective. I strongly support the desire to grow EMF beyond its Queensland base and share these benefits to emergency patients across Australia.”



Dr Stephen Macdonald

A senior medical officer at the Flinders Medical Centre emergency department and the South Australian Ambulance Service, Professor Hugh Grantham, brings his expertise from leading Australian Medical Assistance Teams and as a Bellberry Human Research Ethics Committee member to the EMF Research Evaluation Panel.

“Research evaluation in emergency medicine needs processes that are robust and nimble. Evaluation should be guided by insight into the reality of performing research in an environment that can be challenging and very different from the controlled laboratory. EMF processes meet this challenge and deliver useful outcomes to understanding all aspects of emergency medicine.”



Prof Hugh Grantham

BOARD AND COMMITTEE MEETING REGISTER

NAME	POSITION	Board	FRAC	SAC	SGC
		Meetings key: x/y (x=number attended y=number held)			
Dr Kim Hansen	Board Chair	6/6			
Dr Jeremy Furyk	Board Director; SAC member	5/6		0/1	
A/Prof Shane George	Board Director	6/6			
Mr Christopher Headon	Board Director	4/4			
Dr Peter Isdale AM	Board Director; SGC member	1/1			1/1
Ms Cathy Montesin	Board Director; FRAC Chair	5/6	5/5		
Adj Professor Shelley Nowlan	Board Director	3/6			
Dr Andrew Spiller	Board; SGC member	6/6			2/2
Dr Ellen Burkett	SAC Chair			4/5	
Dr Stephen Macdonald	SAC member			3/5	
Dr Diann Eley	SAC member			5/5	
Dr Jamie Seymour	SAC member			5/5	
Dr Marianne Wallis	SAC member			2/3	
Dr Angie Nguyen Vu	SAC member			5/5	
Ms Susanne Le Boutillier	FRAC member		4/5		
Mr Scott Bryant	FRAC member		5/5		
Ms Jacqueline Keller	FRAC member		5/5		
Mr Martin Heads	FRAC member		5/5		
Ms Beth Chapman	FRAC member		5/5		
Ms Jane Schmitt	SGC Chair				1/2
Dr Gerry FitzGerald	SGC member				1/2
Professor Patsy Yates	SGC member				2/2

EMF Board Committees

FRAC: Finance, Risk and Audit Committee; SAC: Scientific Advisory Committee; SGC: Strategic Grants Committee.

Thank you to all Strategic Grants Committee and Scientific Advisory Committee members whose collective experience, wisdom and guidance has been instrumental to the successful running of EMF research programs. Stay tuned for details of a new research governance process to be implemented during the 2020/2021 Financial Year.

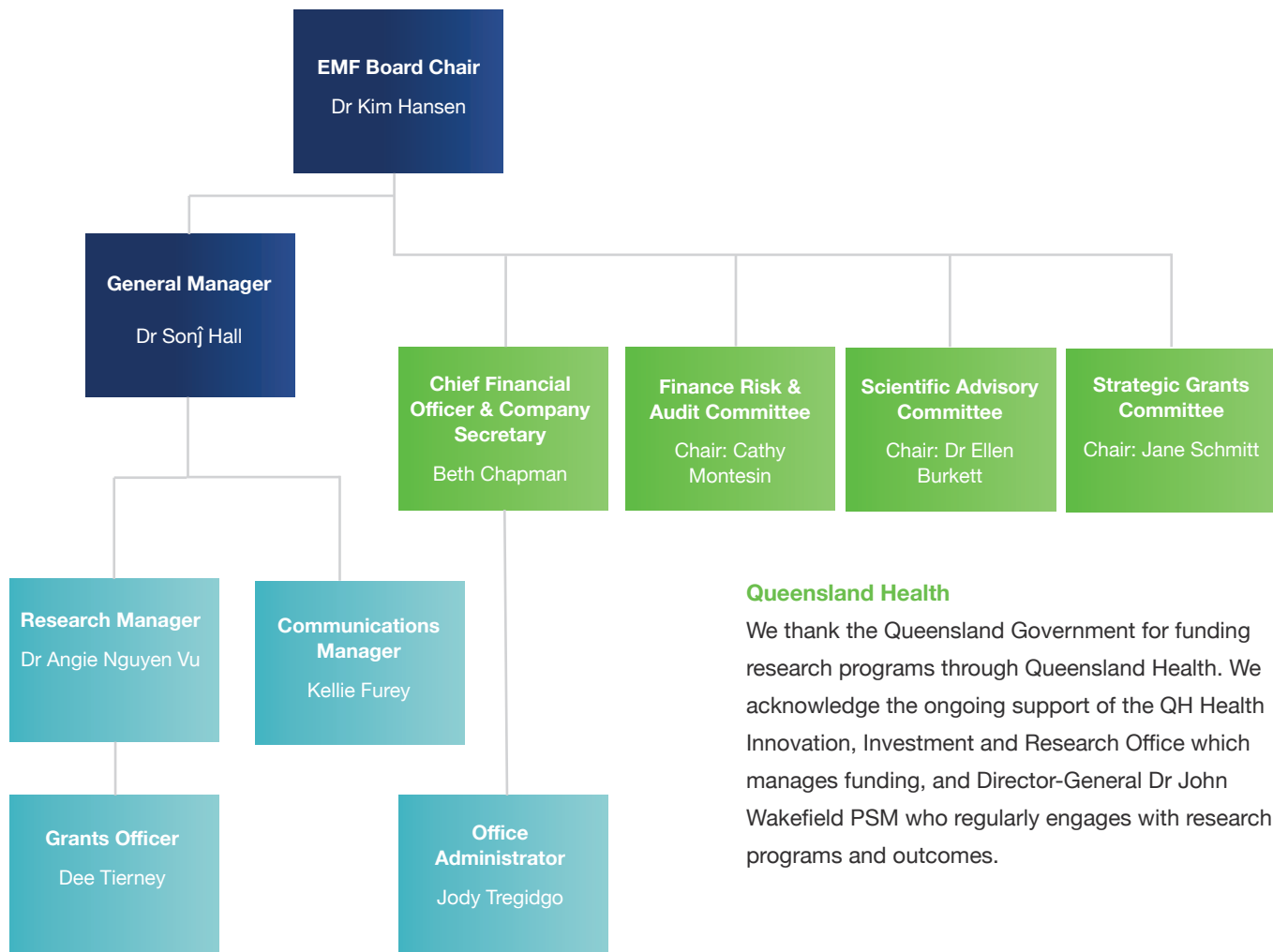
EMF is extremely grateful to all current and past members of our Research Evaluation Panel who generously gave their time to peer review our grant applications.

2019-2020 Research Evaluation Panel members:

Dr Peter Isdale AM (REP Chair to 2019), Prof Patsy Yates (REP Chair current), Prof David Atkinson, A/Prof Lauren Ball, Dr Daniel Bodnar, A/Prof Marc Broadbent, Emeritus Prof Mike Daube, A/Prof Martin Downes, Dr Simon Craig, Prof Belinda Gabbe, Prof Hugh Grantham, Dr Allison Hempenstall, Dr Sanjeewa Kularatna, Dr Luke Lawton, Prof Sarah Medland, A/Prof Doug Morel, A/Prof Amy Mullens, Prof Biswadev Mitra, A/Prof Bill Nimo, A/Prof Fenton O'Leary, Dr Ulrich Orda, Prof Greg Peterson, A/Prof Bernice Redley, Dr Sean Rothwell, Dr Lisa Sharwood, Dr Amith Shetty, Prof Karen Smith, A/Prof Allan Stirling, A/Prof Kerriane Watt, Dr Frances Williamson, Dr Erik Wood

ORGANISATIONAL STRUCTURE

As of 30 June 2020



Queensland Health

We thank the Queensland Government for funding research programs through Queensland Health. We acknowledge the ongoing support of the QH Health Innovation, Investment and Research Office which manages funding, and Director-General Dr John Wakefield PSM who regularly engages with research programs and outcomes.



"Diving medicine is niche without many research grants available. An earlier EMF grant led to the completion of my co-researcher's PhD, and the most recent grant is supporting my graduate research. EMF grants were also essential to the acceptance of my application for the James Cook University PhD program."

Dr Denise Blake
Townsville University Hospital
2016 Staff Specialist Grant

FINANCIAL SUMMARY

With a team of six (5.2 FTE), the Emergency Medicine Foundation runs a highly efficient and productive operation.

In 2019-20, EMF committed \$1.2 million to research grants and building clinician research capacity. The remaining funds were used to manage research activities, as well as for corporate and organisational matters. Further information is available in the **EMF 2019-20 Financial Report** available online.

Completion of annual financial statements

On 9th September 2020, the EMF Finance, Risk and Audit Committee (FRAC) made recommendation to the EMF Board which endorsed the 2019-20 Financial Statements for signing on 16th September 2020. Bentleys Chartered Accountants independently audited the Statements.

Financial outcome

EMF operated within its budget in accordance with total sources of funds and revenue from the

Queensland Government, earnings on investments as well as income from other sources, for the 2019 - 20 financial year. In total, EMF dispersed almost \$930,000 for research and research infrastructure; because of COVID-19 some contracts and other paperwork has been delayed and funds are being held in readiness. The company incurred operational expenses of \$677,000, including corporate expenses, events and communication and business development activities. This was in line with expenditure from the previous year.

Sources of funds

Since 2008, the EMF has received \$2 million, plus GST, annually from Queensland Health to enable and fund the Queensland Research Program. In 2019-20, EMF received the third and final tranche of funding under its three-year funding contract with Queensland Health, from 2017-18 to 2019-20. EMF also received \$164,481 from other sources, including \$122,515 generated in interest on EMF's invested cash reserves and \$41,966 in federal government COVID-19 stimulus payments.



STATEMENT OF FINANCIAL POSITION

As at 30 June 2020

AS AT 30 JUNE 2020			
	Note	2020	2019
		\$	\$
ASSETS			
CURRENT ASSETS			
Cash and cash equivalents	7	7,093,846	6,537,260
Trade and other receivables	8	14,752	31,118
Other assets	9	14,719	9,834
TOTAL CURRENT ASSETS		7,123,317	6,578,212
NON-CURRENT ASSETS			
Property, Plant & Equipment	10	124,430	13,029
TOTAL NON-CURRENT ASSETS		124,430	13,029
TOTAL ASSETS		7,247,747	6,591,241
LIABILITIES			
CURRENT LIABILITIES			
Trade and other payables	11	69,008	92,050
Lease liability – office space		48,755	-
TOTAL CURRENT LIABILITIES		117,763	92,050
NON CURRENT LIABILITIES			
Provisions	12	17,662	14,560
Lease liability – office space		65,782	-
TOTAL NON CURRENT LIABILITIES		83,444	14,560
TOTAL LIABILITIES		201,207	106,610
NET ASSETS		7,046,540	6,484,631
EQUITY			
Retained surplus (deficit)		7,046,540	6,484,631
TOTAL EQUITY		7,046,540	6,484,631

INDEPENDENT AUDITORS REPORT

**Report of the Independent Auditor
On the Summary Financial Statements
To the Members of Emergency Medicine Foundation Ltd**



Opinion

The summary financial statements, which comprise the Statement of Financial Position as at 30 June 2020, are derived from the audited financial report of Emergency Medicine Foundation Ltd (the "Company") for the year ended 30 June 2020.

In our opinion, the accompanying summary financial statements are consistent, in all material respects, with the audited financial report.

Summary Financial Statements

The summary financial statements do not contain all the disclosures required by Australian Accounting Standards - Reduced Disclosure Requirements and *Division 60 of the Australian Charities and Not-for-Profits Commission Act 2012*. Reading the summary financial statements and the auditor's report thereon, therefore, is not a substitute for reading the audited financial report and the auditor's report thereon. The summary financial statements and the audited financial report do not reflect the effects of events that occurred subsequent to the date of our report on the audited financial report.

The Audited Financial Report and Our Report Thereon

We expressed an unmodified audit opinion on the audited financial report in our report dated 21 September 2020.

Directors' Responsibility for the Summary Financial Statements

The Directors of the Company are responsible for the preparation of the summary financial statements and the extraction of such information from the Company's full financial report to give an abridged summary of the financial position of the entity for the relevant financial year under review. This responsibility includes ensuring the summary financial statements are free from material misstatement, whether due to fraud or error.

Auditor's Responsibility

Our responsibility is to express an opinion on whether the summary financial statements are consistent, in all material respects, with the audited financial report based on our procedures, which were conducted in accordance with Auditing Standard ASA 810 *Engagements to Report on Summary Financial Statements*.

Bentleys Brisbane (Audit) Pty Ltd
Chartered Accountants

Ashley Carle
Director
Brisbane
23 September 2020



A member of Bentleys, a network of independent advisory and accounting firms located throughout Australia, New Zealand and China that trade as Bentleys. All members of the Bentleys Network are affiliated only, are separate legal entities and not in partnership. Liability limited by a scheme approved under Professional Standards Legislation. A member of Allinial Global – an association of independent accounting and consulting firms.



HELP MAKE RESEARCH HAPPEN



FUNDRAISING

Play a direct role in finding better ways to save lives in an emergency by raising money for research; make your next charity event in aid of EMF-funded research.



WORKPLACE GIVING

A smarter, tax-effective way to give through voluntary, automatic donations from pretax pay. Companies can enhance the impact by matching employees' donations.



SUPPORT TARGETED RESEARCH

EMF can award grants in memory of loved ones or colleagues or in the name of an organisation or family, ensuring your investment goes to your chosen area of research.



CREATE A SCHOLARSHIP

A scholarship can support an emergency healthcare clinician. EMF will promote the scholarship and select the foremost recipient through a competitive, peer-reviewed process.




PARTNER WITH THE EMERGENCY MEDICINE FOUNDATION

- EMF is a trusted, highly respected organisation. By partnering with us, you can drive research focused on helping Australians receive the right care, at the right time and in the right place.
- Our world-class, innovative grants programs are governed in line with Australia's peak funding bodies for medical research.
- Through our rigorous and transparent processes, only the most scientifically robust projects are awarded funding.
- We have the proven ability to operate highly successful grants programs, and our operations are audited annually.
- More than 80 per cent of your investment will directly fund and manage research thanks to our lean operations.
- EMF is a non-profit organisation with charitable, health promotion and deductible gift recipient (DGR) status. Your investment is tax deductible.

Emergency Medicine Foundation Ltd
Suite 1b, Terraces, 19 Lang Parade, Milton, Qld 4064
General phone: 07 3720 5700
Office hours: 9am to 5pm, Monday to Friday
General email: info@emfoundation.org.au



Emergency Medicine Foundation

 /emfresearch
 @emfresearch
 /emfresearch